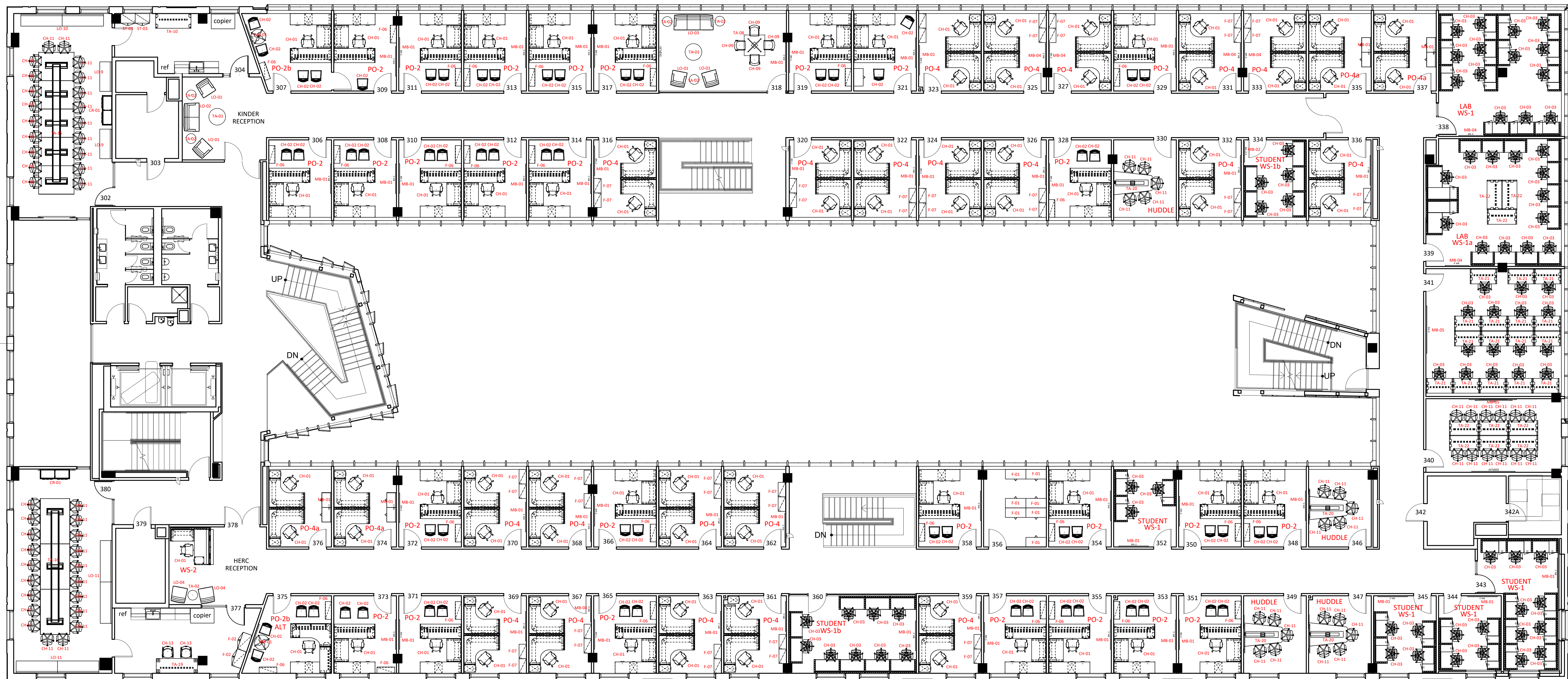


RICE
KRAFT BUILDING - LEVEL 1
1/8" = 1'-0"

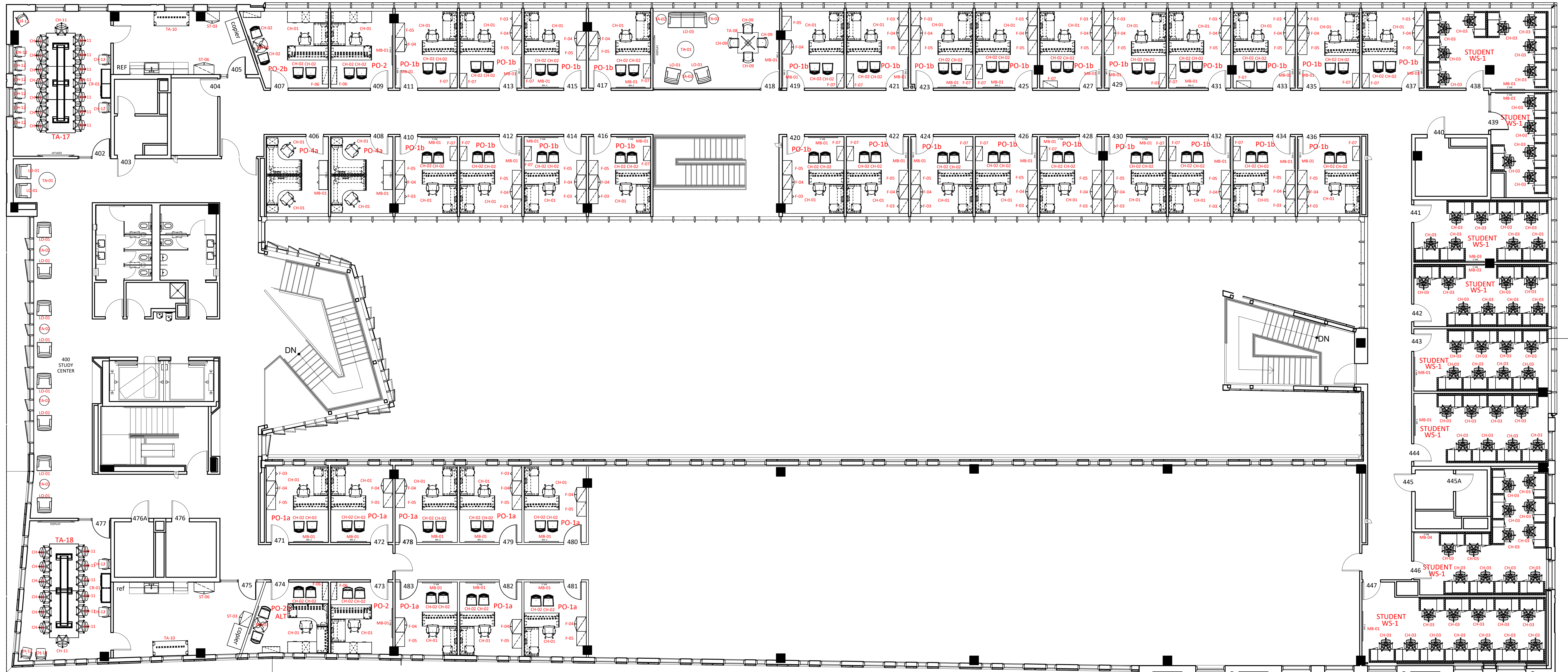


RICE
KRAFT BUILDING - LEVEL 2

1/8" = 1'-0"



RICE
 KRAFT BUILDING - LEVEL 3
 1/8" = 1'-0"



RICE
 KRAFT BUILDING - LEVEL 4
 $\frac{1}{8}'' = 1'-0''$