

Moveable Furnishings Specification

Project Name **Rice University**  
Moody Center for Arts

Date 06.01.2016

Item Bench

Item Tag **B.01**

**Product**

Manufacturer / Geiger  
Product

Product No. ST3BQ

Description Tuxedo Museum Bench, Quilted  
5-5 Upholstery @bristol leather-Pr Cat (Geiger) 10  
06 5-5\_Colors +bristol leather sky gray  
CHR Base Finish @chrome  
NOCAL Fire Retardancy @not fire retardant



Overall Dim.: W D

Quantity: 2

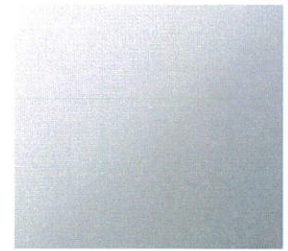
Location: **Secured Gallery 120**

**Construction**

**Finish**

Description Base Finish

Style Chrome



**Finish**

Description 5-606 Sky Gray

Style Geiger Bristol

Manufacturer Geiger

Color

Grade 5



**Finish**

**NOTES**

No substitution  
Russ Fabiani, Russ\_Fabiani@geigerfurniture.com, 832.655.3730

Moveable Furnishings Specification

Project Name **Rice University**  
Moody Center for Arts

Date 06.01.2016

Item Chair

Item Tag **C.01**

**Product**

Manufacturer / Product Herman Miller

Product No. *MRF123AWAF*

Description +Wk Chr,Mirra 2,Std-Ht,Tlt Lmtr/Ang,Non-Upht Adj Arms, Flex adj seat depth, Butterfly susp back N8AJ Back Support O... +adjustable lumbar support 6K7 Base/Frame Fin... +h alloy with graphite C7 Casters/Glides +2 1/2" caster, black yoke, hard floors or carpet SG Back Finish +slate grey 8M Butterfly™ Back... +latitude-Pr Cat 3 21 8M\_Colors +latitude slate grey 63 Armpad Finish +fog 1A7 AireWeave™ 2 ... +aireweave-Pr Cat 1 02 1A7\_Colors +aireweave 2 slate grey

Overall Dim.: **W D**

Quantity: 26

Location: **Control Rm 230, Off. 111, 112, 113, 114, 202,203, 208, 212,213,214,215,216,217,218,233,234,235,reception 100**

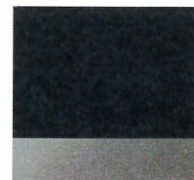


**Construction**

**Finish**

Description Frame/Base & Tilt

Style Graphite H-Alloy 6K7



**Finish**

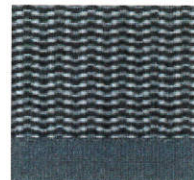
Description Seat - AireWeave 2/Price Category 1

Style

Manufacturer Herman Miller

Color Grey

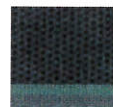
Grade 1



**Finish**

Description Butterfly Suspension Back

Style Slate Grey - 8M21/SG



**NOTES**

No Substitution  
Rebekah Kieval, Rebekah\_Kieval@hermanmiller.com, 713-296-9481

Moveable Furnishings Specification

Project Name **Rice University**  
Moody Center for Arts

Date 06.01.2016  
Item Chair  
Item Tag **C.02**

**Product**

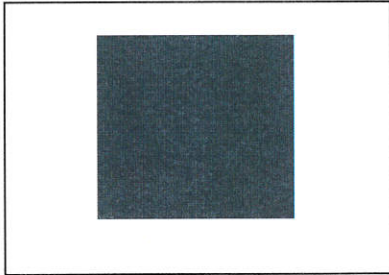
Manufacturer / Product Herman Miller  
Product No. CQ51MA  
Description Chr,Setu Multipurpose,5-star base,std-ht range,lyris suspension seat/bck,ribbon arms  
Frame Finish +slate grey  
L7 Base Finish +h-alloy  
HCC Casters/Glides +2 1/2" braking caster, black yoke, hard floors or c...  
BMP Bumper +top corner bumpers  
4W Suspension Mat... +lyris 2-Pr Cat 1  
26 4W\_Colors +lyris 2 slate grey

SG



Overall Dim.:           W           D  
Quantity:           34  
Location:           **Flex studio 115, Manager 106**

**Construction**

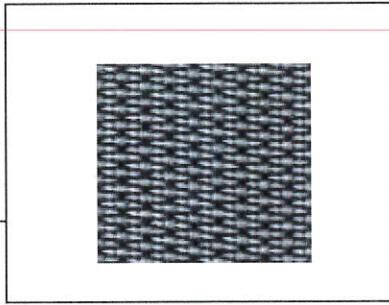


**Finish**

Description Frame  
Style Slate Grey | SG

**Finish**

Description Seat & Back  
Style Lyris 2  
Manufacturer Herman Miller  
Color Slate Grey  
Grade Price Category 1



**Finish**

Description Base  
Style H-Alloy | L7



No substitution

Rebekah Kieval, Rebekah\_Kieval@hermanmiller.com, 713-296-9481

Moveable Furnishings Specification

Project Name **Rice University**  
 Moody Center for the Arts

Date 06.01.2016

Item Chair

Item Tag **C.03**

**Product**

Manufacturer / Product Herman Miller

Product No. WC420P

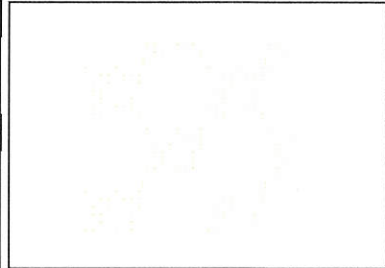
Description Caper Stacking Chair, Flexnet Seat, Fixed Arms MS  
 Frame Finish +metallic silver  
 98 Seat/Back Finish +studio white  
 U5 Casters/Glides +soft wheel caster, carpet or hard floors  
 63 Arm Finish/Arm ... +fog  
 6V Flexnet™ Material +flexnet-Pr Cat 1  
 02 6V\_Colors +flexnet silver grey



Overall Dim.: W D  
 Quantity: 132  
 Location: Classroom 103, 201, 210, 205, 206, 237

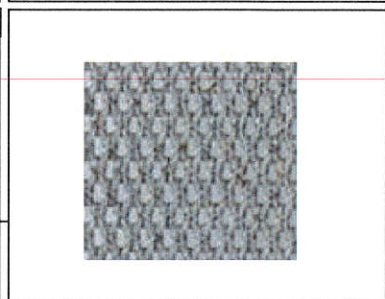
**Construction**

Casters - soft wheel caster, carpet or hard floors



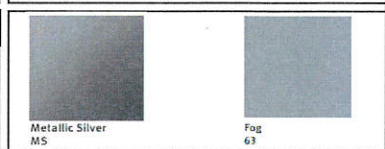
**Finish**

Description Seat / Back Finish  
 Style Studio White | 98



**Finish**

Description Suspension Seat  
 Style Flexnet  
 Manufacturer Herman Miller  
 Color Silver Grey | 6V02  
 Grade Price Category 1



**Finish**

Base & Frame	--	Arms
Metallic Silver   MS	--	Fog   63

**NOTES**

**No Substitution**  
 Rebekah Kieval, Rebekah\_Kieval@hermanmiller.com, 713-296-9481

Moveable Furnishings Specification

Project Name **Rice University**  
Moody Center for the Arts

Date 06.01.2016

Item Chair

Item Tag **C.04**

**Product**

Manufacturer / Product Herman Miller

Product No. WC7521P

Description Caper Multipurpose Stool, 5-Star Base Stool Hgt Range, Flexnet Seat, Fixed Arms MS Frame Finish +metallic silver  
98 Seat/Back Finish +studio white  
C7 Casters/Glides +2 1/2" caster, black yoke, hard floors or carpet  
63 Arm Finish/Arm ... +fog  
6V Flexnet™ Material +flexnet-Pr Cat 1  
02 6V\_Colors +flexnet silver grey

Overall Dim.: W D

Quantity: 7

Location: **ARTIST'S STUDIO 211, CLASSROOM 103, 201, 205, 210, 206, 237**



**Construction**

**Finish**

Description Seat / Back Finish

Style Studio White | 98

**Finish**

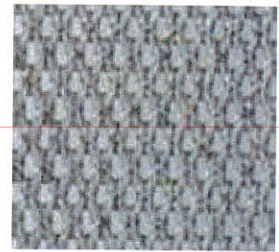
Description Suspension Seat

Style Flexnet

Manufacturer Herman Miller

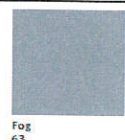
Color Silver Grey | 6V02

Grade Price Category 1



**Finish**

Base & Frame	--	Arms
Metallic Silver   MS	--	Fog   63



**NOTES**

**No Substitution**  
Rebekah Kieval, Rebekah\_Kieval@hermanmiller.com, 713-296-9481

Moveable Furnishings Specification

Project Name **Rice University**  
Moody Center for the Arts

Date 06.01.2016

Item Chair

Item Tag **C.05**

**Product**

Manufacturer / Product Herman Miller

Product No. WC121P

Description Caper Multi-purpose Chair, Flexnet Seat, Fixed Arms  
Frame Finish +metallic silver  
98 Seat/Back Finish +studio white  
C7 Casters +2 1/2" caster, black yoke, hard floors or carpet  
63 Arm Finish/Arm ... +fog  
6V Flexnet™ Material +flexnet-Pr Cat 1  
02 6V\_Colors +flexnet silver grey

MS

Overall Dim.: W D

Quantity: 8

Location: AV EDIT 245, 244, 243, 242



**Construction**

Casters - 2 1/2" caster, black yoke, hard floors or carpet

**Finish**

Description Seat / Back Finish

Style Studio White | 98

**Finish**

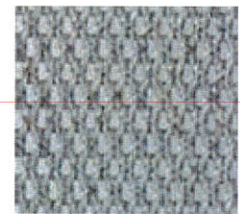
Description Suspension Seat

Style Flexnet

Manufacturer Herman Miller

Color "Silver Grey | 6V02

Grade Price Category 1



**Finish**

Base & Frame	--	Arms
Metallic Silver   MS	--	Fog   63



**NOTES**

**No Substitution**  
Rebekah Kieval, Rebekah\_Kieval@hermanmiller.com, 713-296-9481

Moveable Furnishings Specification

Project Name **Rice University**  
Moody Center for the Arts

Date 06.01.2016

Item Chair

Item Tag C.06

**Product**

Manufacturer / Safco  
Product

Product No. 3432.02

Description Lab Stool, Pneumatic No Back, Momentum Millennium Nector Fabric  
09143814 Millennium Nector Fabric

Overall Dim.:         W                 D                 H  
Quantity:            8  
Location:            AV EDIT 245, 244, 243, 242



**Construction**

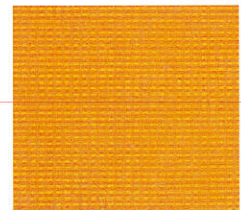
**Finish**

Description                                 Base  
Style   Chrome



**Finish**

Description                                 Millennium, Nector 26-0010754-1262  
Style   Momentum Colors  
Manufacturer                                 Momentum  
Color   Orange  
Grade   Grade 3



**Finish**

**NOTES**

No substitution  
Morgan Costanza(281)-380-0259 morgan@workspacemarketing.com

Moveable Furnishings Specification

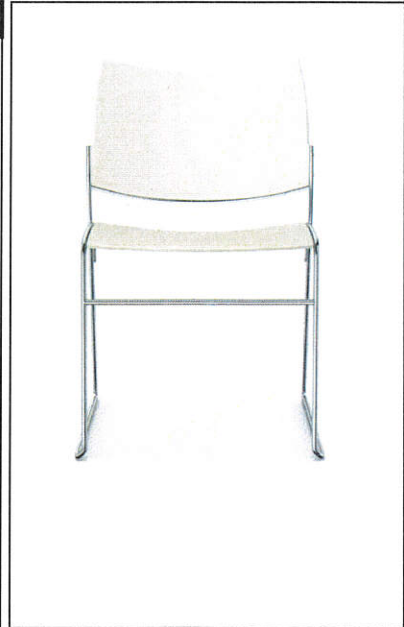
Project Name **Rice University**  
 Moody Center for the Arts

Date 06.01.2016  
 Item Chair  
 Item Tag **C.07**

**Product**

Manufacturer / Casala  
 Product  
 Product No. 9092697  
 Description Curvy Side Chair CT Plastic Clear, White Chrome,  
 Plastic

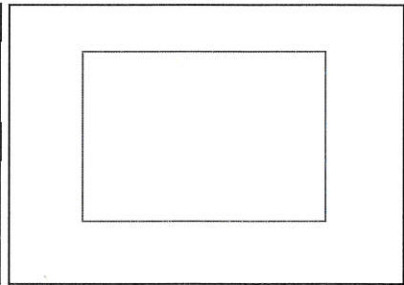
Overall Dim.:           W                   D                   H  
 Quantity: 135  
 Location: **CHAIR AND TABLE STORAGE 140**



**Construction**

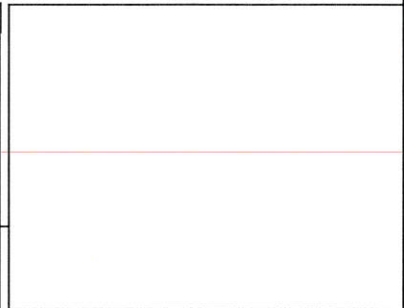
**Finish**

Description Clear White  
 Style Plastics



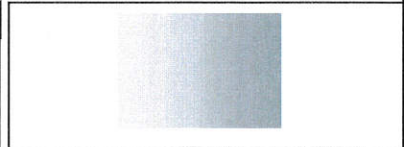
**Finish**

Description  
 Style  
 Manufacturer  
 Color  
 Grade



**Finish**

Chrome



**NOTES**

No substitution  
 Dow Oneal T 415.816.0579, doneal@dwr.com, Quote # S01032797





Moveable Furnishings Specification

Project Name **Rice University**  
 Moody Center for the Arts

Date 06.01.2016

Item Chair

Item Tag **C.09**

**Product**

Manufacturer / Product Herman Miller

Product No. *WC410N*

Description Caper Stacking Chair Molded Seat No Arms MS  
 Frame Finish +metallic silver  
 98 Seat/Back Finish +studio white  
 YX Glides, carpet or hard floors



Overall Dim.: W D

Quantity: 12

Location: **Dressing Room 132, 133**

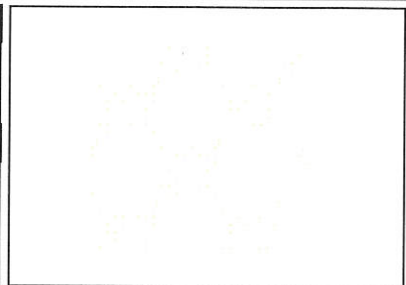
**Construction**

Casters - soft wheel caster, carpet or hard floors

**Finish**

Description Seat / Back Finish

Style Studio White | 98



**Finish**

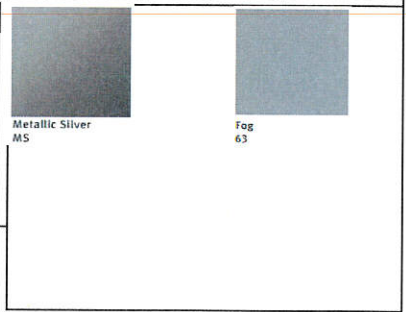
Description Base & Frame

Style Paint

Manufacturer Herman Miller

Color Metallic Silver | MS -- Fog | 63

Grade Price Category 1



**Finish**

**NOTES**

No Substitution  
 Rebekah Kieval, Rebekah\_Kieval@hermanmiller.com, 713-296-9481

Moveable Furnishings Specification

Project Name **Rice University**  
 Moody Center for the Arts

Date 06.01.2016

Item Chair

Item Tag **C.10**

**Product**

Manufacturer / Hightower  
 Product

Product No. *FC12500*

Description FOUR CAST FOUR  
 WHITE FRAME  
 WHITE PLASTIC

Overall Dim.:           W                   D                   H

Quantity: 24

Location: **CAFÉ 219, FACULTY BREAK ROOM 239**



**Construction**

**Finish**

Description Plastic Finish

Style White



**Finish**

Description

Style

Manufacturer

Color

Grade

**Finish**

Frame Finish

White



WHITE

**NOTES**

No substitutions  
 Michelle Jarvie, michelle@mjarviepartnership.com, 713-397-8816, QUOTE26274

Moveable Furnishings Specification

Project Name **Rice University**  
 Moody Center for the Arts

Date 06.01.2016

Item Stool

Item Tag **C.11**

**Product**

Manufacturer / Product Hightower

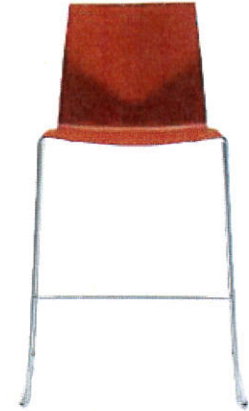
Product No. *FC13904*

Description FOUR CAST FOUR HIGH  
 WHITE FRAME  
 WHITE PLASTIC

Overall Dim.:            **W**                            **D**                            **H**

Quantity: 10

Location: **CAFÉ 219**



**Construction**

**Finish**

Description Plastic Finish

Style White



**Finish**

Description

Style

Manufacturer

Color

Grade

**Finish**

Frame Finish

White



WHITE

**NOTES**

No substitutions  
 Michelle Jarvie, michelle@mjarviepartnership.com, 713-397-8816, QUOTE26274



Moveable Furnishings Specification

Project Name **Rice University**  
 Moody Center for the Arts

Date 06.01.2016

Item Lounge

Item Tag **C.13**

**Product**

Manufacturer / Product Bernhardt Design

Product No. 4755

Description BERNHARDT CHIARA LOUNGE CHAIR,  
 COM FABRIC, MAHARAM DIVINA BY KVADRAT 460730-936

Overall Dim.: W D H

Quantity: 1

Location: **RECEPTION 100**



**Construction**

**Finish**

Description Base

Style Polished aluminum



**Finish**

Description Divina by Kvadrat 460730-936

Style Kvadrat

Manufacturer Maharam

Color Green

Grade



**Finish**

**No Substitution**

**Notes**

Contact: Ana Davidson ana@fergusonrice.com, T: 713.666.8585 , Reference quote #6966







Moveable Furnishings Specification

Project Name **Rice University**  
 Moody Center for the Arts

Date 06.01.2016  
 Item Lounge  
 Item Tag C.16

**Product**

Manufacturer / Hightower  
 Product  
 Product No. GZ7450  
 Description Didi Lounge Chair. Stitching in matching thread standard, please specify if contrasting is preferred.  
 \*CONTRASTING FABRICS\*  
 COM: OUTSIDE BACK : Maharam Divina by Kvadrat 460730-536 (Bright Orange)  
 COM: SEAT & INSIDE BACK: Maharam Divina by Kvadrat 460730-542 (Dk. Orange) Dimensions: W 28 1/2" x D 27 1/2" x H 27 1/2" x SH 15 3/4".  
 Contrasting Fabric

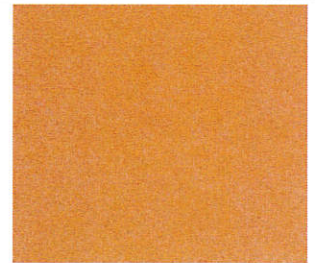
Overall Dim.:           **W**                   **D**                   **H**  
 Quantity:               6  
 Location:               **BREAK OUT SPACE 200**



**Construction**

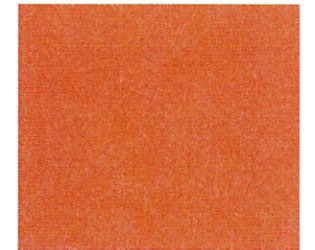
**Finish**

Description COM - INSIDE FABRIC ONLY  
 Style Maharam - Divina by Kvadrat 460730-526



**Finish**

Description COM - OUTSIDE FABRIC ONLY  
 Style Divina by Kvadrat 460730-542  
 Manufacturer Maharam  
 Color Orange  
 Grade



**Finish**

**NOTES:**

No substitutions  
 Michelle Jarvie, michelle@mjarviepartnership.com, 713-397-8816, QUOTE26274

Moveable Furnishings Specification

Project Name **Rice University**  
 Moody Center for the Arts

Date 06.01.2016  
 Item Chair  
 Item Tag **C.17**

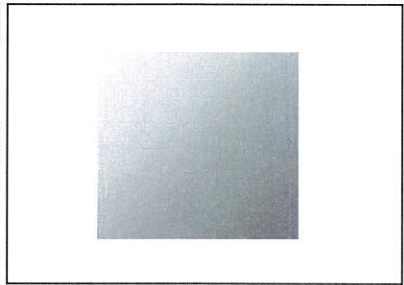
**Product**

Manufacturer / Product Herman Miller  
 Product No. EA335P  
 Description Chair, Eames Alum Mgmt, casters w/pneumatic seat-hgt adjustment, std-hgt range  
 VD Casters +2" hard double wheel caster, carpet, chrome  
 L Base Finish +polished aluminum  
 L Frame Finish +polished aluminum  
 HMI Fabric: HMI Hopsak Ultramarine Dark 14A47



Overall Dim.:           W                   D                   H  
 Quantity:           12  
 Location:           **MEETING ROOM 204**

**Construction**

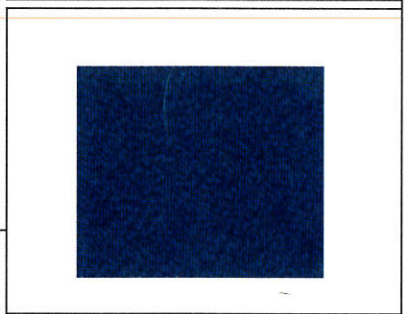


**Finish**

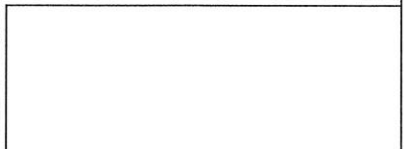
Description Base & Frame Finish  
 Style Polished Aluminum | L

**Finish**

Description Fabric  
 Style Hopsak - Ultramarine Dark | 14A47  
 Manufacturer Herman Miller  
 Color Blue  
 Grade Price Category 5



**Finish**



**NOTES**

No Substitution  
 Rebekah Kieval, Rebekah\_Kieval@hermanmiller.com, 713-296-9481

Moveable Furnishings Specification

Project Name **Rice University**  
Moody Center for the Arts

Date 06.01.2016

Item Chair

Item Tag **C.18**

**Product**

Manufacturer / Product Herman Miller

Product No. *CQ51FA*

Description Chr,Setu Multipurpose,5-star base,std-ht range,suspended upholstery seat/bck,ribbon arms  
SG Frame Finish +slate grey  
L7 Base Finish +h-alloy  
HCC Casters/Glides +2 1/2" braking caster, black yoke, hard floors or c...  
TF Suspension Mat...Maharam divina  
70 TF\_Colors +divina 756

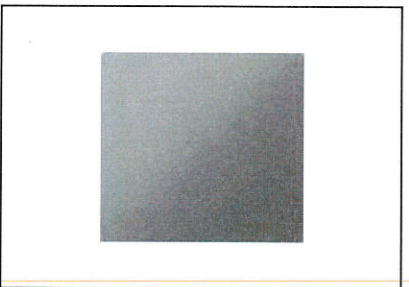


Overall Dim.:            **W**                    **D**                    **H**  
Quantity:                8  
Location:                **MEETING ROOM 240**

**Construction**

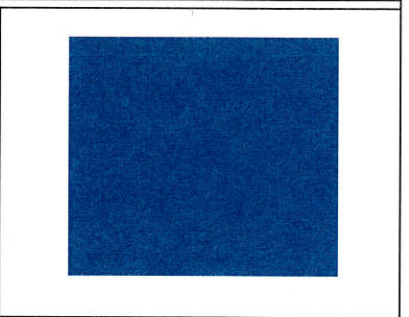
**Finish**

Description Base Finish  
Style H-Alloy | L7



**Finish**

Description Fabric  
Style Divina by Kvadrat 460730-756  
Manufacturer Maharam  
Color Blue  
Grade



**Finish**

Franme Finish  
Slate grey | SG



**NOTES**

**No Substitution**  
Rebekah Kieval, Rebekah\_Kieval@hermanmiller.com, 713-296-9481

Moveable Furnishings Specification

Project Name **Rice University**  
 Moody Center for the Arts

Date 06.01.2016

Item Chair

Item Tag **C.19**

**Product**

Manufacturer / Product Herman Miller

Product No. CQ51FA

Description Setu Multipurpose,5-star base,std-ht range,suspended upholstery seat/bck,ribbon arms

SG Frame Finish +slate grey

L7 Base Finish +h-alloy

HCC Casters/Glides +2 1/2" braking caster, black yoke, hard floors or c...

14A Suspension Mat... +hopsak-Pr Cat 5

47 14A\_Colors +hopsak ultramarine dark

Overall Dim.: **W D H**

Quantity: 6

Location: **OFFICE 212, 218, 235**

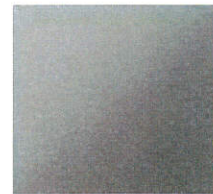


**Construction**

**Finish**

Description Base Finish

Style H-Alloy | L7



**Finish**

Description Fabric

Style Hopsak - Ultramarine Dark | 14A47

Manufacturer Herman Miller

Color Blue

Grade



**Finish**

Frame Finish

Slate Grey | SG



**NOTES**

**No Substitution**  
 Rebekah Kieval, Rebekah\_Kieval@hermanmiller.com, 713-296-9481

Moveable Furnishings Specification

Project Name **Rice University**  
 Moody Center for the Arts

Date 06.01.2016

Item Chair

Item Tag **C.20**

**Product**

Manufacturer / Product Herman Miller

Product No. CQ51FA

Description Setu Multipurpose,5-star base,std-ht range,suspended upholstery seat/bck,ribbon arms  
 SG Frame Finish +slate grey  
 L7 Base Finish +h-alloy  
 HCC Casters/Glides +2 1/2" braking caster, black yoke, hard floors or c...  
 14A Suspension Mat. hopsak-Pr Cat 5  
 40 14A\_Colors hopsak orange



Overall Dim.: W D H

Quantity: 9

Location: OFFICE 112, 202, 216, 214, 233

**Construction**

**Finish**

Description Base Finish

Style H-Alloy | L7



**Finish**

Description Fabric

Style Hopsak Orange 14A40

Manufacturer Herman Miller

Color Orange

Grade Price Category 5



**Finish**

Frame Finish

Slate Grey | SG



**NOTES**

**No Substitution**  
 Rebekah Kieval, Rebekah\_Kieval@hermanmiller.com, 713-296-9481

Moveable Furnishings Specification

Project Name **Rice University**  
 Moody Center for the Arts

Date 06.01.2016

Item Chair

Item Tag **C.21**

**Product**

Manufacturer / Product Herman Miller

Product No. CQ51FA

Description Setu Multipurpose,5-star base,std-ht range,suspended upholstery seat/bck,ribbon arms  
 SG Frame Finish +slate grey  
 L7 Base Finish +h-alloy  
 HCC Casters/Glides +2 1/2" braking caster, black yoke, hard floors or c...  
 14A Suspension Mat. hopsak-Pr Cat 5  
 40 14A\_Colors hopsak emerald dark

Overall Dim.:           W                   D                   H  
 Quantity: 10  
 Location: **OFFICE 113, 203, 213, 217, 234**

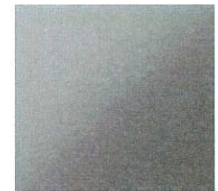


**Construction**

**Finish**

Description Base Finish

Style H-Alloy | L7



**Finish**

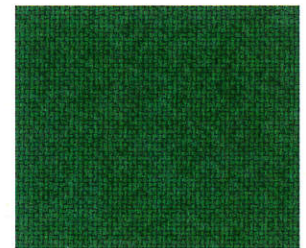
Description Fabric

Style Hopsak Emerald Dark 14A38

Manufacturer Herman Miller

Color

Grade Price Category 5



**Finish**

Frame Finish

Slate Grey | SG



**NOTES**

**No Substitution**  
 Rebekah Kieval, Rebekah\_Kieval@hermanmiller.com, 713-296-9481

Moveable Furnishings Specification

Project Name **Rice University**  
 Moody Center for the Arts

Date 06.01.2016

Item Chair

Item Tag **C.22**

**Product**

Manufacturer / Product Herman Miller

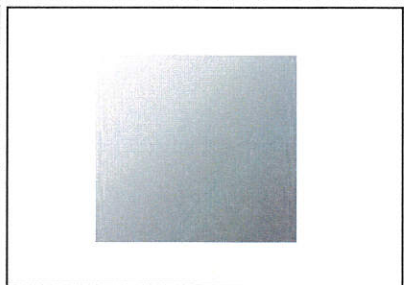
Product No. EA335P

Description Eames Alum Mgmt, casters w/pneumatic seat-hgt adjustment, std-hgt range  
 VD Casters +2" hard double wheel caster, carpet, chrome  
 L Base Finish +polished aluminum  
 L Frame Finish +polished aluminum  
 14A Fabric @hopsak-Pr Cat 5  
 47 14A\_Colors +hopsak ultramarine dark



Overall Dim.:            **W**                    **D**                    **H**  
 Quantity:                6  
 Location:                **OFFICE 215**

**Construction**

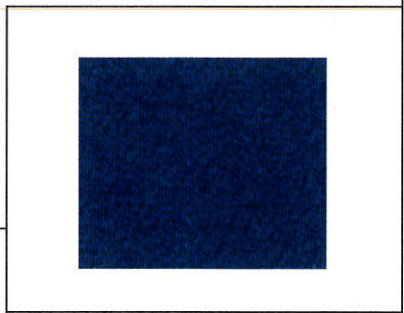


**Finish**

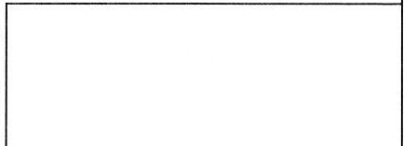
Description Base & Frame Finish  
 Style Polished Aluminum | L

**Finish**

Description Fabric  
 Style Hopsak - Ultramarine Dark | 14A47  
 Manufacturer Herman Miller  
 Color Blue  
 Grade Price Category 5



**Finish**



**NOTES**

No Substitution  
 Rebekah Kieval, Rebekah\_Kieval@hermanmiller.com, 713-296-9481

Moveable Furnishings Specification

Project Name **Rice University**  
 Moody Center for the Arts

Date 06.01.2016

Item Desk

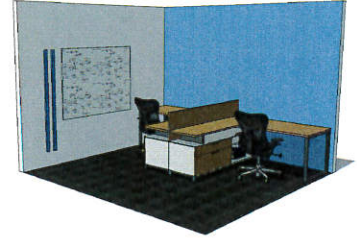
Item Tag **D.01**

**Product**

Manufacturer / Product Herman Miller

Product No. *SEE DETAILED DRAWING*

Description Canvas desk



Overall Dim.:            **W**                    **D**                    **H**  
 Quantity:                2  
 Location:                **OFFICE 111, 114**

**Construction**

**Finish**

Description Laminated - LBB

Style Oak on Ash



**Finish**

Description Metal

Style

Manufacturer Herman Miller

Color Metallic Silver | MS

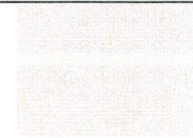
Grade Graded In



**Finish**

Metal

91 White

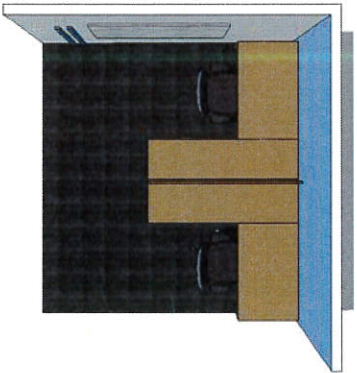


**NOTES**

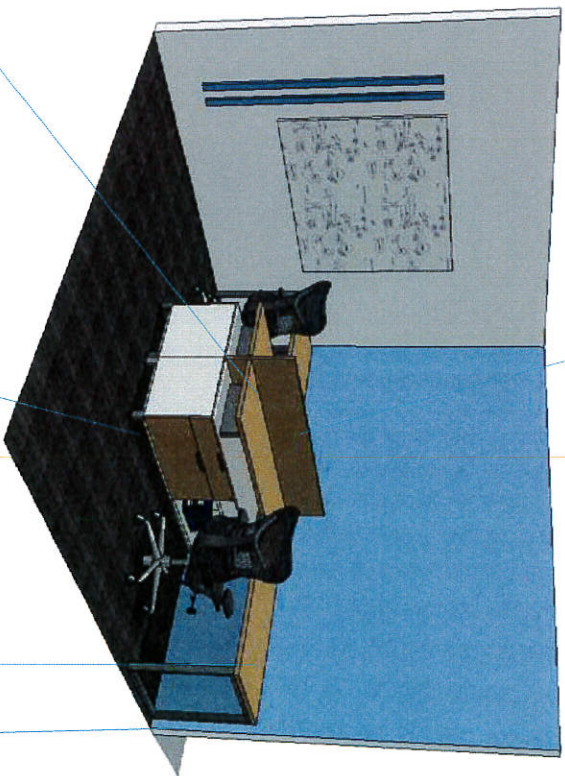
**No Substitution**  
 Rebekah Kieval, Rebekah\_Kieval@hermanmiller.com, 713-296-9481



**D.01**  
Level 1  
Office 111 & 114



72Wx20D Woodgrain laminate  
worksurface, supported by metallic  
silver stanchions



72Wx46H laminate Privacy panel

72Wx20D Metal case, laminate  
front low credenza with (1) 36W  
open shelves, (1) 36W box/file, bar  
pull, lockable, architectural legs

47Wx30"D woodgrain laminate  
worksurface

Metal open leg support, metallic  
silver



Laminate: LBB  
Oak on Ash



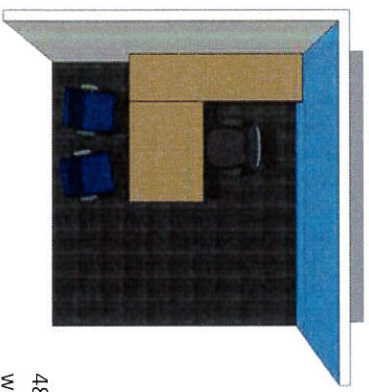
Metal: 91 White



Metal: MS  
Metallic Silver

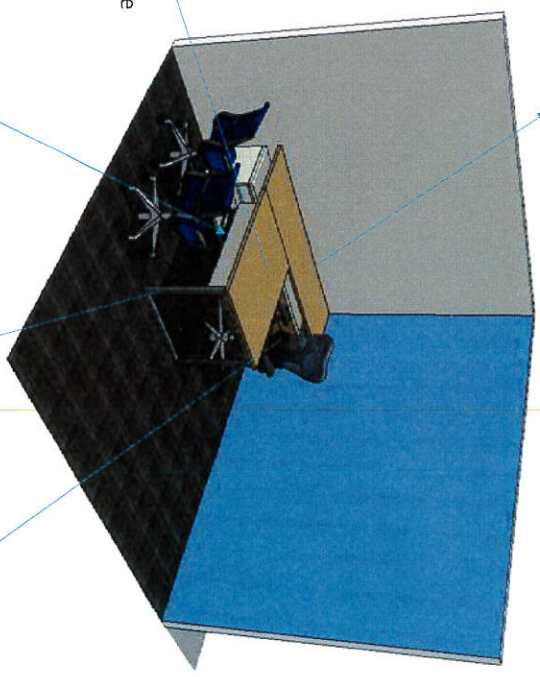


**D.02**  
**Level 1**  
**Office 112, 113**



48Wx36"D woodgrain laminate work surface, stiffener, cable management trough

84Wx24D Woodgrain laminate work surface, supported by metallic silver stanchions



42"W laminate modesty panel

Metal open leg support, metallic silver

84Wx20D Metal case, laminate front low credenza with (1) 42Wx20D open shelves, (1) 42Wx20D box/file, bar pull, lockable, 4"H architectural foot



Laminate: LBB  
 Oak on Ash



Metal: 91 White



Metal: MS  
 Metallic Silver

Moveable Furnishings Specification

Project Name **Rice University**  
 Moody Center for the Arts

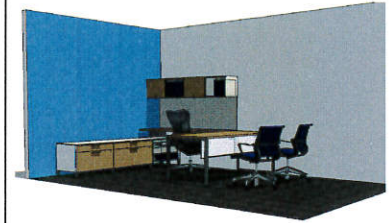
Date 06.01.2016

Item Desk

Item Tag **D.03**

**Product**

Manufacturer / Product Herman Miller  
 Product No. *SEE DETAILED DRAWING*  
 Description Canvas desk



Overall Dim.:            **W**                    **D**                    **H**  
 Quantity:                9  
 Location:                **OFFICE 202, 203, 212, 213, 214, 217, 218, 234, 235**

**Construction**

**Finish**

Description Laminates : LBB  
 Style Oak on Ash



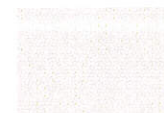
**Finish**

Description Metal  
 Style  
 Manufacturer Herman Miller  
 Color Metallic Silver  
 Grade Graded In



**Finish**

Metal  
 91 White



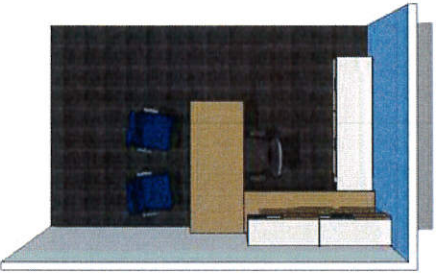
**NOTES**

**No Substitution**  
 Rebekah Kieval, Rebekah\_Kieval@hermanmiller.com, 713-296-9481

**D.03**

**Level 2**

202, 203, 212, 213, 214, 217, 218, 234, 235



90Wx20D Metal case, laminate front low credenza with  
(1) 30Wx20D open shelves, (2) 30Wx20D box/file, bar  
pull, lockable, 4"H architectural foot

72Wx15W Metal case, laminate front sliding overhead,  
lockable, with LED task lights

72Wx24"D woodgrain laminate  
work surface, square edge

Wall mounted track board,  
horizontal, tackable, 24H  
72W

30"D Metal  
open leg  
support,  
metallic silver

66"W laminate modesty panel

72Wx30"D woodgrain laminate  
work surface, stiffener, cable  
management trough



Laminate: LBB  
Oak on Ash



Metal: 91 White



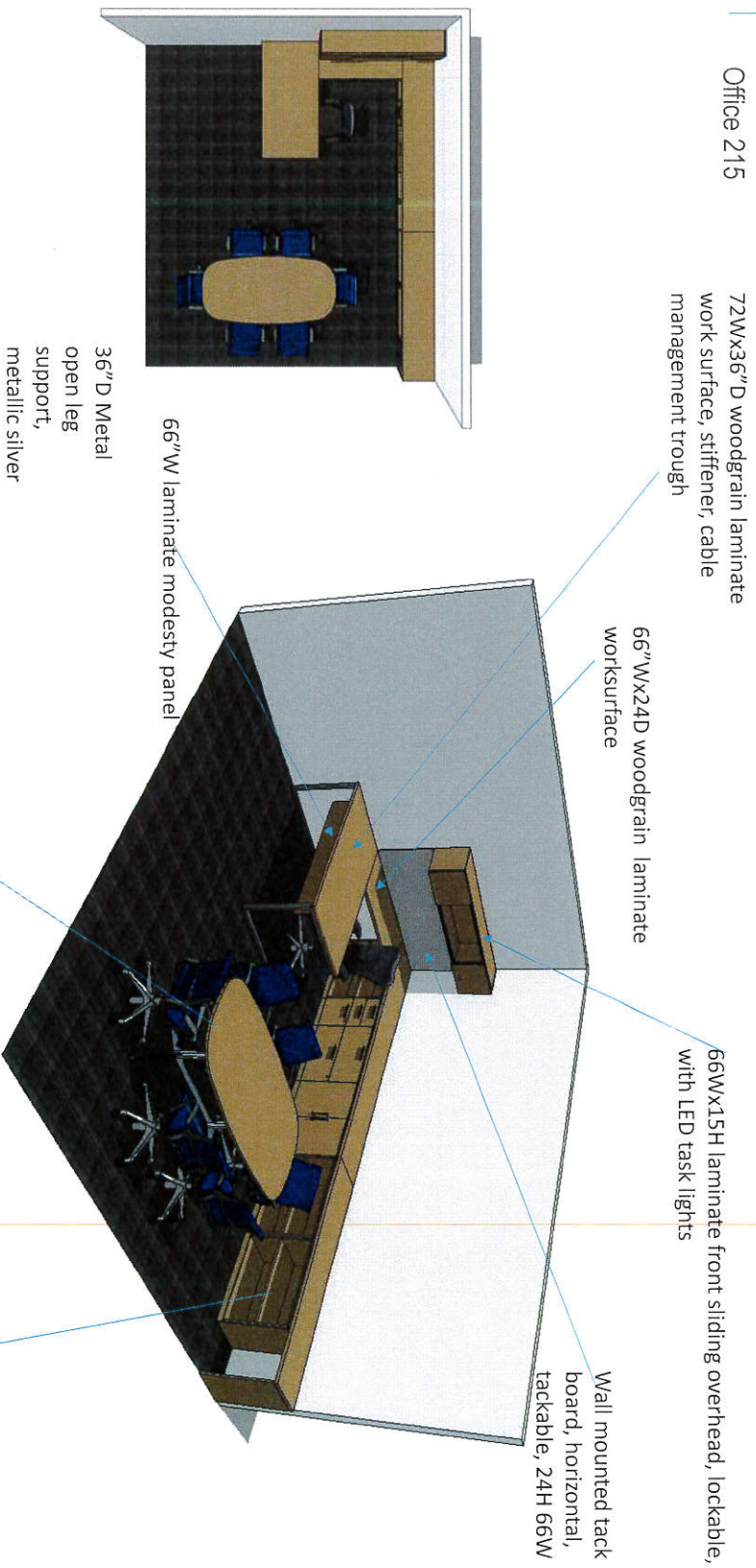
Metal: MS  
Metallic Silver



Trackboard Fabric: 8T19  
Crossing Shale



**D.04**  
Level 2  
Office 215



Laminate: LBB  
Oak on Ash

Metal: 91 White



Metal: MS  
Metallic Silver



Tackboard Fabric: 8T19  
Crossing Shale

Moveable Furnishings Specification

Project Name **Rice University**  
 Moody Center for the Arts

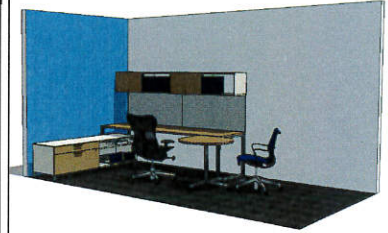
Date 06.01.2016

Item Desk

Item Tag **D.05**

**Product**

Manufacturer / Product Herman Miller  
 Product No. *SEE DETAILED DRAWING*  
 Description Canvas desk



Overall Dim.: **W D H**  
 Quantity: 1  
 Location: **OFFICE 216**

**Construction**

Tackboard fabric - 8T19 Crossing Shale



**Finish**

Description Laminate : LLB  
 Style Oak on Ash



**Finish**

Description Metal  
 Style  
 Manufacturer Herman Miller  
 Color Metallic Silver | MS  
 Grade Graded-In



**Finish**

Metal  
 91 White

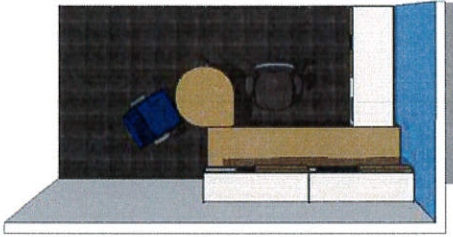


**NOTES**

**No Substitution**  
 Rebekah Kieval, Rebekah\_Kieval@hermanmiller.com, 713-296-9481

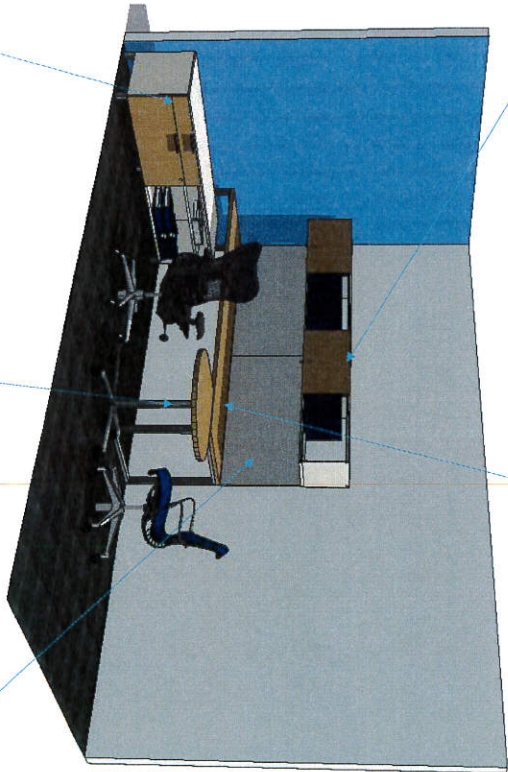


**D.05**  
Level 2  
Office 216



96Wx15H Metal case, laminate front sliding overhead, lockable, with LED task lights

96Wx30"D woodgrain laminate work surface, stiffener, cable management trough



72Wx20D Metal case, laminate front low credenza with (1) 36Wx20D open shelves, (1) 36Wx20D box/file

Wall mounted tack board, horizontal, tackable, 24H 96W

30D Teardrop laminate table, square edge



Laminate: LBB  
Oak on Ash

Metal: 91 White



Metal: MS  
Metallic Silver



Tackboard Fabric: 8T19  
Crossing Shale

Moveable Furnishings Specification

Project Name **Rice University**  
Moody Center for the Arts

Date 06.01.2016

Item Desk

Item Tag **D.06**

**Product**

Manufacturer / Product Herman Miller

Product No. *SEE DETAILED DRAWING*

Description Canvas desk



Overall Dim.: **W** **D** **H**  
Quantity: 1  
Location: **OFFICE 233**

**Construction**

Tackboard Fabric: 8T19 Crossing Shale



**Finish**

Description Laminate : LBB  
Style Oak on Ash



**Finish**

Description Metal  
Style  
Manufacturer Herman Miller  
Color Metallic Silver | MS  
Grade Graded-In



**Finish**

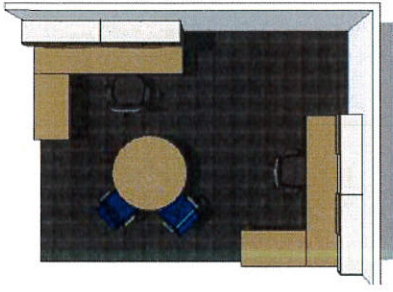
Metal  
91 White



**NOTES**

**No Substitution**  
Rebekah Kieval, Rebekah\_Kieval@hermanmiller.com, 713-296-9481

**D.06**  
Level 2  
Office 233



96Wx15H Metal case, laminate front sliding overhead, lockable, with LED task lights

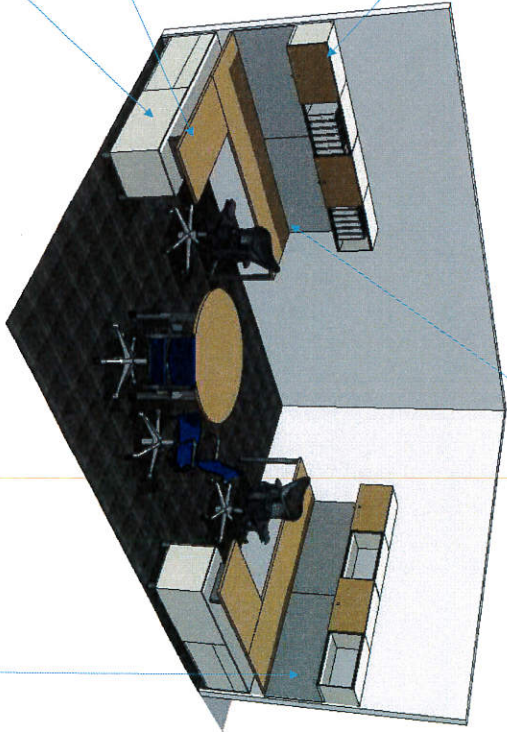
96Wx30"D woodgrain laminate work surface, stiffener, cable management trough

42Wx24D laminate work surface

72Wx20D Metal case, laminate front low credenza with (1) 36Wx20D open shelves, (1) 36Wx20D box/file

42D Round laminate table, square edge, 4 column base

Wall mounted tack board, horizontal, tackable, 24H 96W



Laminate: LBB  
Oak on Ash

Metal: 91 White

Metal: MS  
Metallic Silver

Tackboard Fabric: 8T19  
Crossing Shale

Moveable Furnishings Specification

Project Name **Rice University**  
 Moody Center for the Arts

Date 06.01.2016

Item Desk

Item Tag **D.07 alt**

**Product**

Manufacturer / Product Halo-K  
 Product No. *Halo-K-L-B-S*  
 Description Halo-K Plus  
 (Includes Halo-K, 2 rack shelves, & Set of Speaker Platforms)

Overall Dim.:            **W**                    **D**                    **H**  
 Quantity:                4  
 Location:                **AV/Edit Rooms, 242, 243, 244, and 245**



**Construction**

**Finish**

Description Laminata

Style Balck



**Finish**

Description Metal

Style

Manufacturer

Color Metallic Silver | MS

Grade



**Finish**

**NOTES**

[www.halodesk.com](http://www.halodesk.com)