

Moveable Furnishings Specification

Project Name **Rice University**
Kraft Building

Date 07.22.19

Item Chair

Item Tag **CH.01**

Product

Manufacturer / Product Herman Miller or Similar Ergonomic Task Chair

Product No. CN122AWAA

Description Embody Work Chair
Standard Height
Fully Adjustable Arms
Hard casters
Carpet

Quantity: 172

Location: **Level 2, Level 3, Level 4**



Finish

Description Frame Finish

Color G1 Graphite



Finish

Description Base Finish

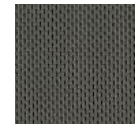
Color G1 Graphite



Finish

Description Fabric Seat/Back

Color 3015 Rhythm Charcoal



NOTES

Same or Equal
Rebekah Kieval, Rebekah_Kieval@hermanmiller.com, 713-296-9481

Moveable Furnishings Specification

Project Name **Rice University**
Kraft Building

Date 06.18.19

Item Chair

Item Tag **CH.02**

Product

Manufacturer / OFS
Product
Product No. 23037
Description Brio 22x22x32 Guest Chair

Quantity: 231
Location: **Level 2, Level 3, Level 4**



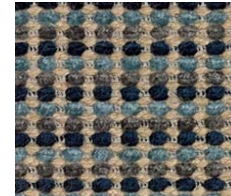
Finish

Description Frame Finish
Color MGO Steel (Steel Grey Oak)



Finish

Description Upholstery
Manufacturer Knoll Textiles
Grade Grade 12
Color Kampala Equator K2032-5



NOTES

No substitution
Mike Denney, mike@mdi.design, 713.871.9009

Moveable Furnishings Specification

Project Name **Rice University**
Kraft Building

Date 06.18.19

Item Chair

Item Tag **CH.03**

Product

Manufacturer / Sit On It
Product

Product No. 2722Y.A142.B1

Description Amplify - Midback Task Chair
Mesh Back
Enhanced Synchro Control
Height/Width Adjustable Arms
Standard Carpet Casters
Standard Black Nylon Base
Standard Cylinder Height

Quantity: 143

Location: **Level 3, Level 4**



Finish

Description Frame Finish

Color FC1 Black



Finish

Description Mesh Back Finish

Color Onyx



Finish

Description Fabric

Manufacturer Sit On It

Grade Grade 2

Color Spice, Caraway



NOTES

No substitution
Clare Devlin, cdevlin@exemplis.com, 832-570-3001

Moveable Furnishings Specification

Project Name **Rice University**
Kraft Building

Date 06.18.19
Item Private Office
Item Tag **CH-04**

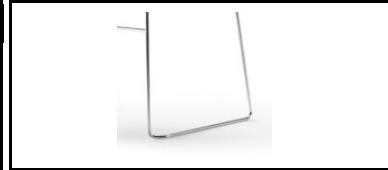
Product

Manufacturer / Source International
Product
Product No. 493-SL-CHR-NG
Description Fully Upholstered Seat
Mesh Back
Sled Base
No Glides
Quantity: 260
Location: **Level 1, Room 130**



Finish

Description Frame Finish
Color Chrome



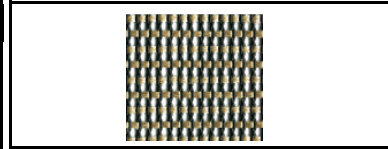
Finish

Description Shell Color
Color



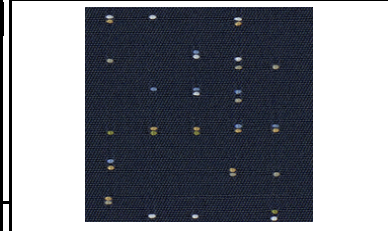
Finish

Description Mesh Color
Color 103 Sand



Finish

Description Fabric
Manufacturer Maharam
Grade Grade F
Color Pepper 466486 Genome



No substitution
Shari Beard, shari@suegormanlp.com, 281-415-8771

Moveable Furnishings Specification

| | | | |
|--------------|------------------------|----------|----------------|
| Project Name | Rice University | Date | 06.18.19 |
| | Kraft Building | Item | Private Office |
| | | Item Tag | CH-04A |

| | |
|------------------------|--------------------------|
| Product | |
| Manufacturer / Product | Source International |
| Product No. | 490/CD |
| Description | Four Wheel Storage Dolly |
| Quantity: | 7 |
| Location: | Level 1, Room 129 |



No substitution
Shari Beard, shari@suegormanlp.com, 281-415-8771

Moveable Furnishings Specification

| | | | |
|--------------|------------------------|----------|--------------|
| Project Name | Rice University | Date | 06.18.19 |
| | Kraft Building | Item | Chair |
| | | Item Tag | CH-05 |

| | |
|------------------------|--|
| Product | |
| Manufacturer / Product | Davis |
| Product No. | AC1020PL |
| Description | A Chair Plastic Shell Upholstered seat Aluminum Base Armless with Tablet |
| Quantity: | 48 |
| Location: | Level 1, Room 125 |



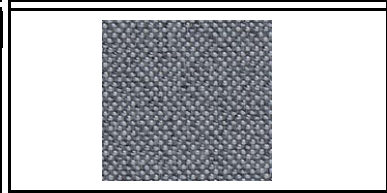
| | |
|---------------|----------------------|
| Finish | |
| Description | Plastic Shell Finish |
| Color | Stone |



| | |
|---------------|-------------------------|
| Finish | |
| Description | Tablet Finish |
| Color | Powdercoat Matte Silver |



| | |
|---------------|-------------------------------|
| Finish | |
| Description | Upholstered Seat |
| Color | Maharam Meld Quill 466387-005 |



No substitution
Miriam Campbell, miriam@jmcassociates.com, 512.587.2298

Moveable Furnishings Specification

Project Name **Rice University**
Kraft Building

Date 06.18.19

Item Chair

Item Tag **CH-06**

Product

Manufacturer / Leland
Product
Product No. *AMS-PU-DL-D-WG-S*
Description Amadeus Side Stacking
Ganging Chair
Sled Base
Shell Selection: Polypropylene with Upholstered Seat Onlay
Glide or Caster Type: Standard

Quantity: 86
Location: **Level 1, Room 110**



Finish

Description Shell Finish
Color Dolphin



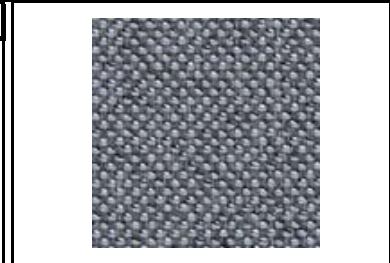
Finish

Description Frame Finish
Color Warm Grey



Finish

Description Upholstery Onlay
Category Grade D
Manufacturer Maharam Textiles
Color Meld Quill 466387-005



No substitution
Mike Denney, mike@mdi.design, 713-871-9009

Moveable Furnishings Specification

Project Name **Rice University**
Kraft Building

Date 06.18.19

Item Stool

Item Tag **CH-07**

Product

Manufacturer / Sit On It
Product

Product No. 1033.BK1.B.S1.AR6

Description Novo Midback Stool
Standard Stool Kit
Mesh Back
Basic
Multi-Adj Arms
Polished Aluminum Base
Hard Floor and Carpet Casters
Knocked Down

Quantity: 3

Location: **Level 1, Room 105, 110, 125**



Finish

Description Lumbar/Frame Finish

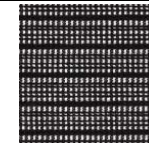
Color Black



Finish

Description Mesh Finish

Color Onyx



Finish

Description Lumbar Accent Finish

Color Onyx



Finish

Description Fabric

Category Grade 2

Manufacturer Sit On It

Color Spice, Caraway



No substitution
Clare Devlin, cdevlin@exemplis.com, 832-570-3001

Moveable Furnishings Specification

| | | | |
|--------------|------------------------|----------|--------------|
| Project Name | Rice University | Date | 06.18.19 |
| | Kraft Building | Item | Chair |
| | | Item Tag | CH-09 |

| | |
|------------------------|--|
| Product | |
| Manufacturer / Product | Sit On It |
| Product No. | <i>1011FT1.PS.A0.SC7.GL1.FC2.AC</i> |
| Description | Lumin Side Chair 4-leg Plastic Seat and Back Armless Standard Multi-Surface Glide |
| Quantity: | 23 |
| Location: | Room 103, 104, 260, 318, 418 |



| | |
|---------------|--------------|
| Finish | |
| Description | Frame Finish |
| Color | Silver |



| | |
|---------------|----------------------|
| Finish | |
| Description | Plastic Shell Finish |
| Color | SC7 Bisque |



No substitution
Clare Devlin, cdevlin@exemplis.com, 832-570-3001

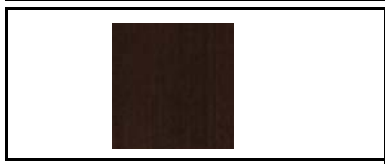
Moveable Furnishings Specification

| | | | |
|--------------|------------------------|----------|--------------|
| Project Name | Rice University | Date | 06.18.19 |
| | Kraft Building | Item | Chair |
| | | Item Tag | CH-10 |

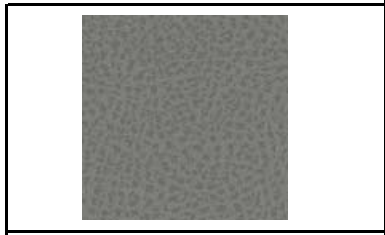
| | |
|------------------------|---|
| Product | |
| Manufacturer / Product | Nemschoff |
| Product No. | 814-62NGSNR1F |
| Description | Leonard II Recliner No Center Seam Std Glides Std Covers Not FR 35"W Upholstered arm caps No moisture barrier No MicrobeCare protection |
| Quantity: | 1 |
| Location: | Level 1, Room 124 |



| | |
|---------------|-------------------|
| Finish | |
| Description | Wood Finish |
| Color | Dark Brown Walnut |



| | |
|---------------|---------------|
| Finish | |
| Description | Upholstery |
| Manufacturer | Maharam, Zinc |
| Color | Lariat |



No substitution
Lynn Windus, lynn_windus@nemschoff.com, 281-326-4587

Moveable Furnishings Specification

Project Name **Rice University**
Kraft Building

Date 06.18.19

Item Chair

Item Tag **CH-11**

Product

Manufacturer / Sit On It
Product

Product No. 1033.BK1.F.AR6

Description Novo, Midback
Mesh Back
Standard Synchro
Multi-Adj Arms
Polished Aluminum Base
Hard Floor and Carpet Casters
Knocked Down

Quantity: 100

Location: **Room 302, 380,330, 346, 347, 349, 340, 402, 477**



Finish

Description Lumbar/Frame Finish

Color Black



Finish

Description Mesh Finish

Color Desert



Finish

Description Lumbar Accent Finish

Color Onyx



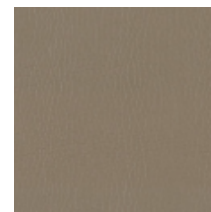
Finish

Description Vinyl

Category Grade 2

Manufacturer Sit On It

Color Element, Pumice



No substitution
Clare Devlin, cdevlin@exemplis.com, 832-570-3001

Moveable Furnishings Specification

Project Name **Rice University**
 Kraft Building

Date 06.18.19

Item Chair

Item Tag **CH-12**

Product

Manufacturer / Sit On It
 Product

Product No. 2221FT1MB.USARO

Description Wit
 Side Chair
 4-leg
 Mesh Back
 Upholstered Seat
 Armless
 Standard Multi-Surface Glide

Quantity: 13

Location: **Room 402, 477**



Finish

Description Frame Finish

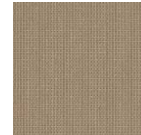
Color Silver



Finish

Description Mesh Back Finish

Color Desert



Finish

Description Vinyl

Grade Grade 2

Manufacturer Sit On It

Color Slide, Desert



No substitution
 Clare Devlin, cdevlin@exemplis.com, 832-570-3001

Moveable Furnishings Specification

Project Name **Rice University**
 Kraft Building

Date 06.18.19

Item Chair

Item Tag **CH-12A**

Product

Manufacturer / Sit On It
 Product

Product No. 2221FT1MB.USARO

Description Wit
 Side Chair
 4-leg
 Mesh Back
 Upholstered Seat
 Armless
 Standard Multi-Surface Glide

Quantity: 10

Location: **Room 202, 220, 280**



Finish

Description Frame Finish

Color Silver



Finish

Description Mesh Back Finish

Color Onyx



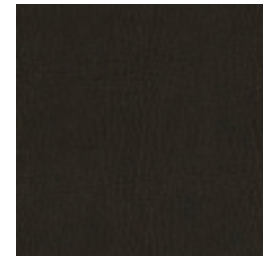
Finish

Description Vinyl

Grade Grade 2

Manufacturer Sit On It

Color Element, Onyx



No substitution
 Clare Devlin, cdevlin@exemplis.com, 832-570-3001

Moveable Furnishings Specification

Project Name **Rice University**
Kraft Building

Date 06.18.19

Item Stool

Item Tag **CH-13**

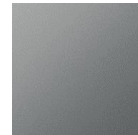
Product

Manufacturer / Product Herman Miller or Similar
 Product No. *WC743010N*
 Description Caper Stacking Stool
 4-Leg Base Bar Hgt Range
 Molded Seat
 No Arms
 Floor Saver Glide insert, hard floors only
 Quantity: 2
 Location: **Level 3, Room 377**



Finish

Description Frame Finish
 Color MS Metallic Silver



Finish

Description Seat/Back Finish
 Color Fog



Finish

Description Arm Cap Finish
 Color SY Silver Grey



Kieval, Rebekah_Kieval@hermanmiller.com, 713-296-9481

Rebekah

Moveable Furnishings Specification

Project Name **Rice University**
Kraft Building

Date 06.18.19

Item Chair

Item Tag **CH-14**

Product

Manufacturer / Global
Product

Product No. 2738MB

Description GRAPHIC, Mesh Back, Medium Back
Posture Back
Std Adj. Height T-arms w/ Sliding Armcaps
Vari-Width Arm
Extensions are Std
Std Molded Black Base
Std 2" Dual Wheel Carpet Casters

Quantity: 46

Location: **Room 202, 220**



Finish

Description Frame Finish

Color Black

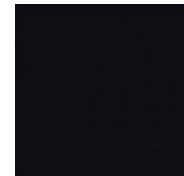


Finish

Description Seat/Back Upholstery

Grade Grade 1

Color Black



No substitution

Emilio Yanez, eyanez@globalfurniture.com, 713-695-5777 x7458

Moveable Furnishings Specification

| | | | |
|--------------|------------------------|----------|--------------|
| Project Name | Rice University | Date | 06.18.19 |
| | Kraft Building | Item | Credenza |
| | | Item Tag | CR-01 |

| | |
|------------------------|--|
| Product | |
| Manufacturer / Product | OFS |
| Product No. | CC-M7136BCC |
| Description | Intermix 71x20x36 Buffet Door/Drawer Credenza Square Edge Shape, Wood Grain PVC TFLSW Finish Era Pull |
| Quantity: | 9 |
| Location: | Room 102, 120, 202, 280, 244, 302, 380, 402, 477 |



| | |
|---------------|------------------------|
| Finish | |
| Description | Finish |
| Color | Steel (Steel Oak Grey) |



| | |
|---------------|--------------|
| Finish | |
| Description | Pull Finish |
| Color | Satin Nickel |



No substitution
Mike Denney, mike@mdi.design, 713-871-9009

Moveable Furnishings Specification

Project Name **Rice University**
 Kraft Building

Date 08.06.19

Item Storage

Item Tag **F-01**

Product

Manufacturer / Product Herman Miller or similar

Product No. LW200.424

Description Lateral File, 42WX20DX51 1/2"H
 W-Pull Freestanding
 4-Drawer
 Textured Paint on Smooth Steel
 Front to back filing, locking, key differently chrome, counterweight

Quantity: 17

Location: **Room 218, 278, 356**



Finish

Description Finish

Color 98 Studio White



Moveable Furnishings Specification

Project Name **Rice University**
 Kraft Building

Date 08.06.19

Item Storage

Item Tag **F-02**

Product

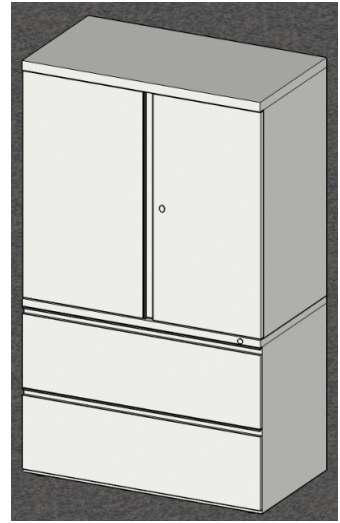
Manufacturer / Product Herman Miller or Similar

Product No. LW200.362, SA769324

Description Lateral File, 36WX20DX64 7/8H
 Add-on Overfile
 W-Pull Freestanding
 2-Drawer on bottom and storage case with shelving on top
 Textured Paint on Smooth Steel
 Front to back filing and side to side filing, counterweight

Quantity: 2

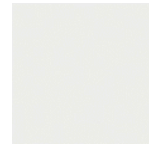
Location: **Room 377**



Finish

Description Finish

Color 98 Studio White



Moveable Furnishings Specification

Project Name **Rice University**
 Kraft Building

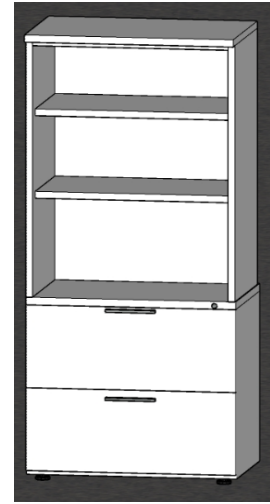
Date 07.22.19

Item Storage

Item Tag **F-03**

Product

Manufacturer / Product Herman Miller or Similar
 Product No. *LK20D.301, LW410.30*
 Description Lateral bookcase combination, 30WX20DX64 7/8H
 Lat File, Bar Pull Freestanding
 2 drawer Raised Height 30W
 Metal Front, bar pull, counterweight
 Textured Paint on smooth steel



Quantity: 47

Location: **Room 243, 246, 247, 248, 249, 265, 267, 471, 472, 478, 479, 480, 481, 482, 483**

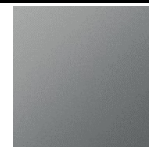
Finish

Description Finish
 Color 98 Studio White



Finish

Description Pull Finish
 Color MS Metallic Silver



NOTES

Kieval, Rebekah_Kieval@hermanmiller.com, 713-296-9481

Rebekah

Moveable Furnishings Specification

Project Name **Rice University**
Kraft Building

Date 07.22.19

Item Storage

Item Tag **F-04**

Product

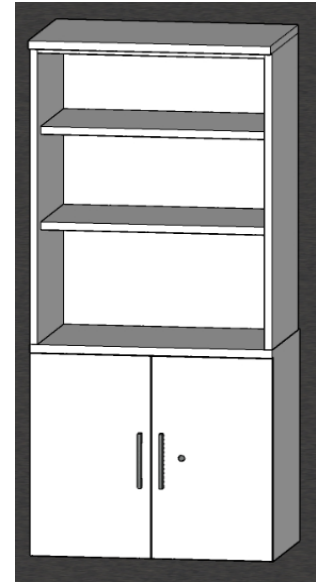
Manufacturer / Product Herman Miller or Similar

Product No. *LW410.30,LK400D.3026*

Description Bookcase/lateral metal combo unit
Storage Case at botto, bookase on top, Bar Pull 30WX20DX 64 7/8H
Metal Front, bar pull
Textured Paint on smooth steel, counterweight, lockable

Quantity: 59

Location: **Room 243, 246, 247, 248, 249, 251, 253, 254, 255, 256, 257, 258, 259, 261, 262, 263, 264,265,266, 267, 268, 269, 270, 272, 410, 411, 412, 413, 414, 416, 417,**



Finish

Description Finish

Color 98 Studio White



Finish

Description Pull Finish

Color MS Metallic Silver



NOTES

Rebekah Kieval, Rebekah_Kieval@hermanmiller.com, 713-296-9481

Moveable Furnishings Specification

Project Name **Rice University**
Kraft Building

Date 08.06.19

Item Storage

Item Tag **F-05**

Product

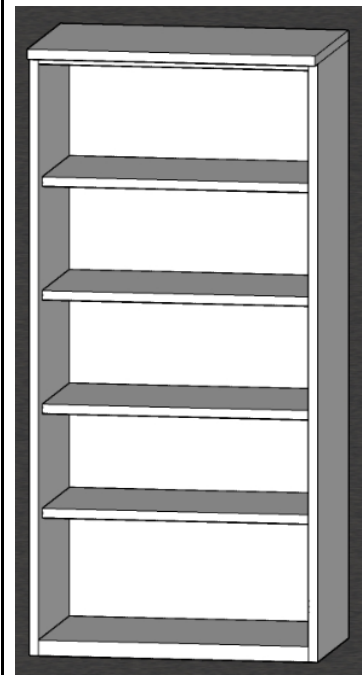
Manufacturer / Product Herman Miller or Similar

Product No. *LG500.3064*

Description Bookcase 30Wx64Hx20D
Textured Paint on smooth steel

Quantity: 57

Location: **Level 2 - 4**



Finish

Description Finish

Color 98 Studio White



Finish

NOTES

Moveable Furnishings Specification

Project Name **Rice University**
 Kraft Building

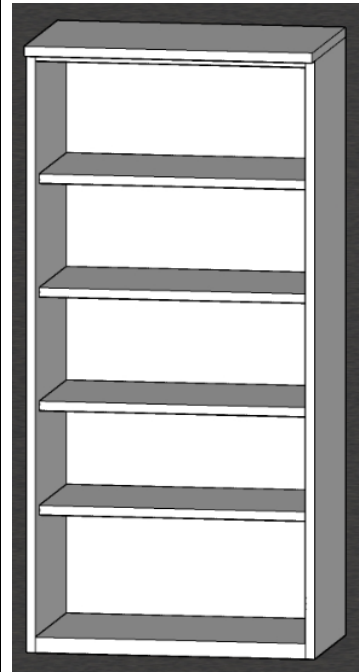
Date 07.22.19

Item Storage

Item Tag **F-06**

Product

Manufacturer / Product Herman Miller or Similar
 Product No. *LG500.3664*
 Description Bookcase 36Wx 64Hx 15D
 Textured Paint on smooth steel



Quantity: 53
 Location: **Room 207, 208, 209, 210, 211, 212, 213, 214, 215, 216, 217, 219, 241, 245, 271, 273, 274, 275, 276, 306, 307, 308, 309, 310, 311, 312, 313, 314, 315, 317, 319, 320, 348, 350, 351, 353, 354, 355, 356, 357, 365, 366, 371, 372, 377, 375, 407, 409, 473, 474**

Finish

Description Finish
 Color 98 Studio White



NOTES

Rebekah Kieval, Rebekah_Kieval@hermanmiller.com, 713-296-9481

Moveable Furnishings Specification

Project Name **Rice University**
Kraft Building

Date 07.22.19

Item Storage

Item Tag **F-07**

Product

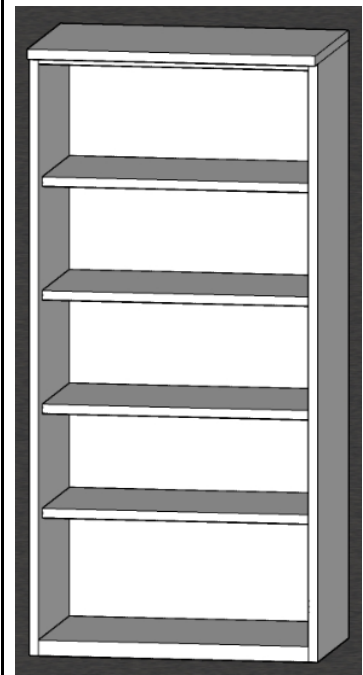
Manufacturer / Product Herman Miller or Similar

Product No. *LG500.3064*

Description Bookcase 36W 64H 15D
Textured Paint on smooth steel

Quantity: 101

Location: **Level 2 - 4**



Finish

Description Finish

Color 98 Studio White



NOTES

Rebekah Kieval, Rebekah_Kieval@hermanmiller.com, 713-296-9481

Moveable Furnishings Specification

Project Name **Rice University**
Kraft Building

Date 07.22.19

Item Lectern

Item Tag **L-01**

Product

Manufacturer / Product Peter Pepper

Product No. *LEVO-02*

Description Levo-02 Fixed Lectern

Quantity: 1

Location: **Level 1, Room 130**



Finish

Description Body Finish

Color Black



No substitution
Miriam Campbell, miriam@jmassociates.com, 512-401-4697

Moveable Furnishings Specification

Project Name **Rice University**
Kraft Building

Date 06.18.19

Item Lounge

Item Tag **LO-01**

Product

Manufacturer / Product Martin Brattrud

Product No. 785-01

Description Braemer Split Back Lounge Chair With Arms
29.5" W x 31" D x 33" H - All Dimensions Are Standard
Metal Base Standard With Polished Chrome Finish
Tight Back With Full Intermediate Split and Inset Lumbar Cushion
Attached Tight Seat As Standard

Quantity: 39

Location: Room 103 (2), 104 (2), 200 (8), 205 (4), 240 (1), 260 (2), 318 (2), 400 (10), 418 (2), Kinder Reception (2)



Finish

Description Leg Finish

Color Polished Chrome

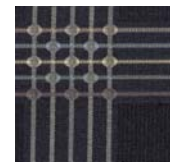


Finish

Description Upholstery

Manufacturer Knoll Textiles

Color Legend CR HC1124-4 Camelot



No substitution
Mike Denney, mike@mdi.design, 713-871-9009

Moveable Furnishings Specification

Project Name **Rice University**
Kraft Building

Date 06.18.19

Item Lounge

Item Tag **LO-02**

Product

Manufacturer / Product Martin Bratrud

Product No. 785-58

Description Braemer 58" Wide Split Back Sofa with Arms 2-Seater
58" W x 31" D x 33" H - All Dimensions Are Standard
Metal Base Standard With Polished Chrome Finish
Split Back With Full Intermediate Split and Inset Lumbar Cushion
Attached Tight Seat As Standard

Quantity: 1

Location: **Kinder Reception**



Finish

Description Leg Finish

Color Polished Chrome

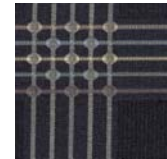


Finish

Description Upholstery

Manufacturer Knoll Textiles

Color Legend CR HC1124-4 Camelot



No substitution
Mike Denney, mike@mdi.design, 713-871-9009

Moveable Furnishings Specification

Project Name **Rice University**
Kraft Building

Date 06.18.19

Item Lounge

Item Tag **LO-03**

Product

Manufacturer / Product Martin Brattrud

Product No. 785-80

Description Braemar 80" Wide Three Seat Split Back Sofa With Arms
80" W x 31"D x 33" H - All Dimensions Are Standard
Metal Base Standard With Polished Chrome Finish
Split Back With Full Intermediate Split and Inset Lumbar Cushion
Attached Tight Seat As Standard

Quantity: 8

Location: Room 103 (1), 104 (1), Study Center 200 (2), 240 (1), 260(1), 318 (1), 418 (1)



Finish

Description Leg Finish

Color Polished Chrome

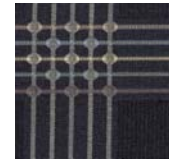


Finish

Description Upholstery

Manufacturer Knoll Textiles

Color Legend CR HC1124-4 Camelot



No substitution
Mike Denney, mike@mdi.design, 713-871-9009

Moveable Furnishings Specification

Project Name **Rice University**
Kraft Building

Date 06.18.19

Item Lounge

Item Tag **LO-04**

Product

Manufacturer / Product Martin Bratrud

Product No. 785-03

Description Braemar Armless Lounge Chair
30" W x 31"D x 33"H x 17.5" SH- All Dimensions Are Standard
Metal Base Standard With Polished Chrome Finish
Split Back With Full Intermediate Split and Inset Lumbar Cushion
Attached Tight Seat As Standard



Quantity: 2

Location: **HERC Reception 378**

Finish

Description Leg Finish

Color Polished Chrome

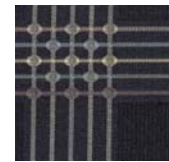


Finish

Description Upholstery

Manufacturer Knoll Textiles

Color Legend CR HC1124-4 Camelot



No substitution

Mike Denney, mike@mdi.design, 713-871-9009

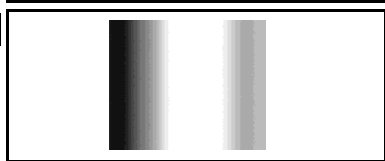
Moveable Furnishings Specification

| | | | |
|--------------|------------------------|----------|--------------|
| Project Name | Rice University | Date | 06.18.19 |
| | Kraft Building | Item | Lounge |
| | | Item Tag | LO-05 |

| | |
|------------------------|---|
| Product | |
| Manufacturer / Product | OFS |
| Product No. | 83441 |
| Description | Rowen Armless Chair 26 x 30 x 28.75 Metal Leg |
| Quantity: | 1 |
| Location: | Level 2, Room 217 |



| | |
|---------------|-----------------|
| Finish | |
| Description | Metal Leg |
| Color | Polished Chrome |



| | |
|---------------|---------------------------|
| Finish | |
| Description | Fabric |
| Category | Grade 2 |
| Manufacturer | Maharam |
| Color | Meld, Skyline 3077163/003 |



No substitution
Mike Denney, mike@mdi.design, 713-871-9009

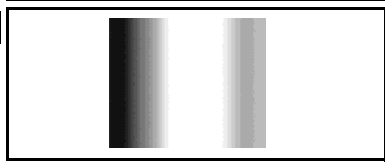
Moveable Furnishings Specification

| | | | |
|--------------|------------------------|----------|--------------|
| Project Name | Rice University | Date | 06.18.19 |
| | Kraft Building | Item | Lounge |
| | | Item Tag | LO-06 |

| | |
|------------------------|---|
| Product | |
| Manufacturer / Product | OFS |
| Product No. | 83042 |
| Description | Rowen Loveseat w/ Arms 58.5x29.75x28.75 Metal Leg |
| Quantity: | 1 |
| Location: | Level 2, Room 217 |



| | |
|---------------|-----------------|
| Finish | |
| Description | Metal Leg |
| Color | Polished Chrome |



| | |
|---------------|---------------------------|
| Finish | |
| Description | Fabric |
| Category | Grade 2 |
| Manufacturer | Maharam |
| Color | Meld, Skyline 3077163/003 |



No substitution
Mike Denney, mike@mdi.design, 713-871-9009

Moveable Furnishings Specification

Project Name **Rice University**
 Kraft Building

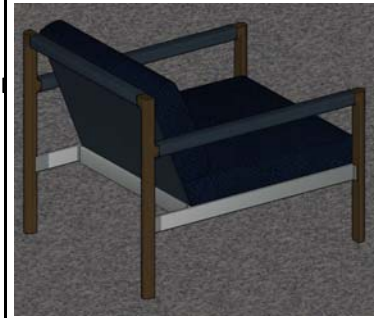
Date 06.18.19

Item Lounge

Item Tag **LO-07**

Product

Manufacturer / Geiger
 Product
 Product No. *SVV4W*
 Description Brabo Lounge Chair
 Walnut Frame



Quantity: 1
 Location: **Room 219**

Finish

Description Fabric Seat
 Manufacturer Geiger
 Grade Grade 5
 Color Boucle, Navy



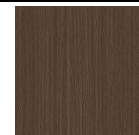
Finish

Description Leather Back and Armcap
 Manufacturer Geiger
 Color Bristol, Midnight Blue



Finish

Description Wood Finish
 Color LBC Walnut on Ash



No substitution
 Jamie Manceaux, jamie_manceaux, 281.753.2700

Moveable Furnishings Specification

| | | | |
|--------------|------------------------|----------|--------------|
| Project Name | Rice University | Date | 06.18.19 |
| | Kraft Building | Item | Lounge |
| | | Item Tag | LO-08 |

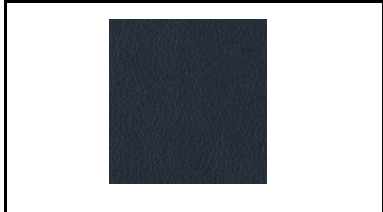
| | |
|------------------------|----------------------------|
| Product | |
| Manufacturer / Product | Geiger |
| Product No. | <i>SVV6W</i> |
| Description | Brabo Sofa Walnut Frame |
| Quantity: | 1 |
| Location: | Room 219 |



| | |
|---------------|--------------|
| Finish | |
| Description | Fabric Seat |
| Manufacturer | Geiger |
| Grade | Grade 5 |
| Color | Boucle, Navy |



| | |
|---------------|-------------------------|
| Finish | |
| Description | Leather Back and Armcap |
| Manufacturer | Geiger |
| Color | Bristol, Midnight Navy |



| | |
|---------------|-------------------|
| Finish | |
| Description | Wood Finish |
| Color | LBC Walnut on Ash |



No substitution
 Jamie Manceaux, jamie_manceaux, 281.753.2700

Moveable Furnishings Specification

| | | | |
|--------------|------------------------|----------|--------------|
| Project Name | Rice University | Date | 06.18.19 |
| | Kraft Building | Item | Lounge |
| | | Item Tag | LO-09 |

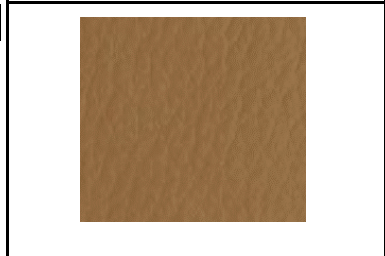
| | |
|------------------------|---|
| Product | |
| Manufacturer / Product | Martin Brattrud |
| Product No. | 940XA |
| Description | Custom Straight Armless K2 Banquette, 60"w X 27"d x 36"h x 19"sh, |
| Quantity: | 2 |
| Location: | Room 302 |



| | |
|---------------|----------------------|
| Finish | |
| Description | Lumbar Pillow Fabric |
| Manufacturer | Maharam |
| Color | Runner, Starboard |



| | |
|---------------|-------------------------------|
| Finish | |
| Description | Banquette Vinyl |
| Grade | Grade 4 |
| Manufacturer | Martin Brattrud |
| Color | Masquerade, Sierra Muir Trail |



No substitution
Mike Denney, mike@mdi.design, 713-871-9009

Moveable Furnishings Specification

Project Name **Rice University**
 Kraft Building

Date 06.18.19

Item Lounge

Item Tag **LO-10**

Product

Manufacturer / Product Martin Brattrud
 Product No. 940XB
 Description Custom Straight Armless K2 Banquette, 168"w X 27"d x 36"h x 19"sh,



Quantity: 1
 Location: **Room 302**

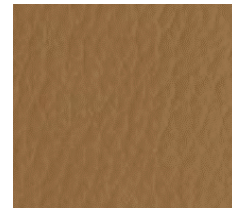
Finish

Description Lumbar Pillow Fabric
 Manufacturer Maharam
 Color Runner, Starboard



Finish

Description Banquette Vinyl
 Grade Grade 4
 Manufacturer Martin Brattrud
 Color Masquerade, Sierra Muir Trail



No substitution
 Mike Denney, mike@mdi.design, 713-871-9009

Moveable Furnishings Specification

| | | | |
|--------------|------------------------|----------|--------------|
| Project Name | Rice University | Date | 06.18.19 |
| | Kraft Building | Item | Lounge |
| | | Item Tag | LO-11 |

| | |
|------------------------|---|
| Product | |
| Manufacturer / Product | Martin Brattrud |
| Product No. | 940XD |
| Description | Custom Straight Armless K2 Banquette, 168"w X 27"d x 36"h x 19"sh |
| Quantity: | 2 |
| Location: | Room 380 |



| | |
|---------------|----------------------|
| Finish | |
| Description | Lumbar Pillow Fabric |
| Manufacturer | Maharam |
| Color | Runner, Starboard |



| | |
|---------------|-------------------------------|
| Finish | |
| Description | Banquette Vinyl |
| Grade | Grade 4 |
| Manufacturer | Martin Brattrud |
| Color | Masquerade, Sierra Muir Trail |



No substitution
Mike Denney, mike@mdi.design, 713-871-9009

Moveable Furnishings Specification

Project Name **Rice University**
Kraft Building

Date 07.22.19
Item Markerboard
Item Tag **MB-01 ALT**

Product

Manufacturer / Claridge
Product
Product No.
Description InvisiMount Magnetic Glassboard
Z-crest Hangers
5'W X 4'H, include marker caddy, magnets

Quantity: 134
Location: Room 103, 104, 241, 243, 245, 246, 247, 248, 249, 250, 251, 252, 254, 255, 260, 261, 262, 263, 264, 265, 267, 268, 269, 270, 271, 272, 273, 274, 275, 276, 306, 308, 309, 310, 311, 312, 313, 314, 315, 316, 317, 318, 319, 320, 321, 323, 324, 326, 327, 328, 329, 332, 335, 336, 337, 343, 344, 345, 346, 348, 350, 351, 352, 353, 354, 355, 357, 358, 359, 360, 361, 362, 363, 364, 365, 366, 368, 369, 370, 371, 372, 373, 374, 275, 376, 406, 407, 408, 409, 410, 411, 412, 413, 414, 415, 416, 417, 418, 419, 420, 421, 422, 423, 424, 425, 426, 427, 428, 429, 430, 431, 432, 433, 434, 435, 436, 437, 438, 439, 443, 444, 447



Finish

Description Finish
Color White

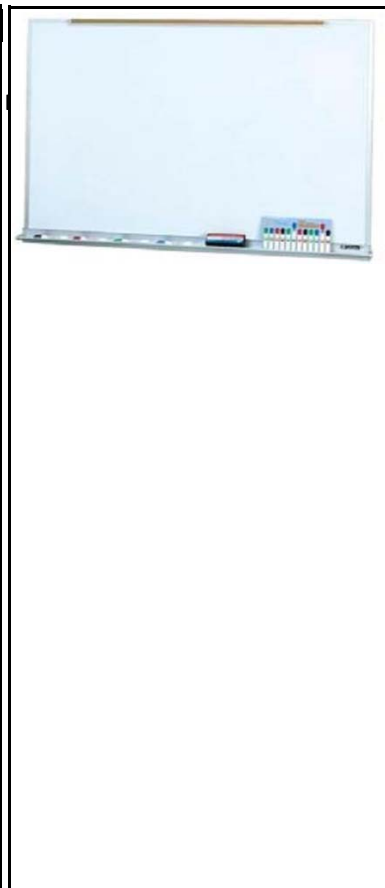


No substitution
Jeff Lewis, jeff@lewisgroup.com, 713-206-6228

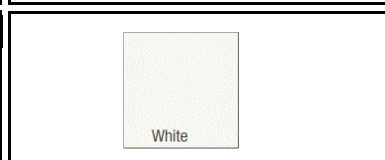
Moveable Furnishings Specification

| | | | |
|--------------|------------------------|----------|--------------|
| Project Name | Rice University | Date | 06.18.19 |
| | Kraft Building | Item | Markerboard |
| | | Item Tag | MB-01 |

| | |
|------------------------|---|
| Product | |
| Manufacturer / Product | Claridge |
| Product No. | |
| Description | InvisiMount Profile Series LCS Boards cleat Hangers 5'W X 4'H |
| Quantity: | 134 |
| Location: | Room 103, 104, 241, 243, 245, 246, 247, 248, 249, 250, 251, 252, 254, 255, 260, 261, 262, 263, 264, 265, 267, 268, 269, 270, 271, 272, 273, 274, 275, 276, 306, 308, 309, 310, 311, 312, 313, 314, 315, 316, 317, 318, 319, 320, 321, 323, 324, 326, 327, 328, 329, 332, 335, 336, 337, 343, 344, 345, 346, 348, 350, 351, 352, 353, 354, 355, 357, 358, 359, 360, 361, 362, 363, 364, 365, 366, 368, 369, 370, 371, 372, 373, 374, 275, 376, 406, 407, 408, 409, 410, 411, 412, 413, 414, 415, 416, 417, 418, 419, 420, 421, 422, 423, 424, 425, 426, 427, 428, 429, 430, 431, 432, 433, 434, 435, 436, 437, 438, 439, 443, 444, 447 |



| | |
|---------------|--------|
| Finish | |
| Description | Finish |
| Color | White |

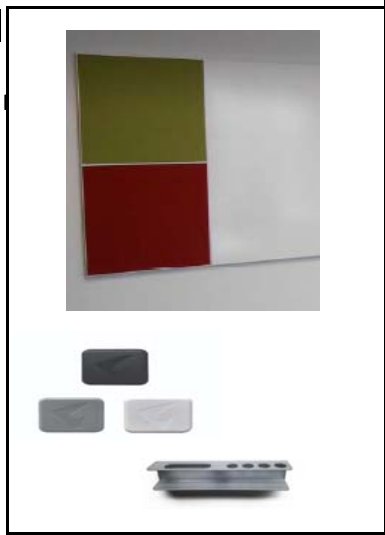


No substitution
 Jeff Lewis, jeff@lewisgroup.com, 713-206-6228

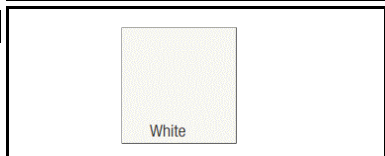
Moveable Furnishings Specification

| | | |
|---|----------|---------------|
| Project Name Rice University Kraft Building | Date | 07.22.19 |
| | Item | Markerboard |
| | Item Tag | MB-01A |

| | |
|------------------------|--|
| Product | |
| Manufacturer / Product | Claridge |
| Product No. | |
| Description | Claridge Combo Board - 5'W x 4'H Tackboard/glassboard combo marker caddy 2 and magnets |
| | Include |
| Quantity: | 11 |
| Location: | Room 207, 208, 209, 210, 211, 212, 213, 214, 215, 216, 217 |



| | |
|---------------|--------|
| Finish | |
| Description | Finish |
| Color | White |



| | |
|---------------|------------------|
| Finish | |
| Description | Tackboard Finish |
| Color | 1690 Gray Mix |



No substitution
Jeff Lewis, jeff@lewisgroup.com, 713-206-6228

Moveable Furnishings Specification

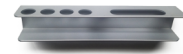
Project Name **Rice University**
 Kraft Building

Date 07.22.19
 Item Markerboard
 Item Tag **MB-02 ALT**

Product

Manufacturer / Product Claridge
 Product No.
 Description InvisiMount Magnetic Glassboard
 Z-cleat Hangers
 3'-6"W X 4'H include marker caddy and magnets

Quantity: 10
 Location: **Room 251, 253, 256, 257, 258, 259, 261, 266, 334**



Finish

Description Finish
 Color White



No substitution
 Jeff Lewis, jeff@lewisgroup.com, 713-206-6228

Moveable Furnishings Specification

Project Name **Rice University**
Kraft Building

Date 06.18.19

Item Markerboard

Item Tag **MB-02**

Product

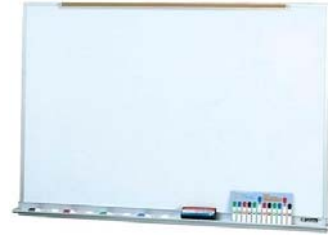
Manufacturer / Claridge
Product

Product No.

Description InvisiMount Profile Series LCS Boards
Z-cleat Hangers
3'-6"W X 4'H

Quantity: 10

Location: **Room 251, 253, 256, 257, 258, 259, 261, 266, 334**



Finish

Description Finish

Color White



No substitution
Jeff Lewis, jeff@lewisgroup.com, 713-206-6228

Moveable Furnishings Specification

Project Name **Rice University**
Kraft Building

Date 07.22.19

Item Markerboard

Item Tag **MB-03 ALT**

Product

Manufacturer / Claridge
Product

Product No.

Description InvisiMount Magnetic Glassboard, include marker caddy and magnets
Z-cleat Hangers
3'W X 4'H

Quantity: 2

Location: **Room 441, 442**



Finish

Description Finish

Color White

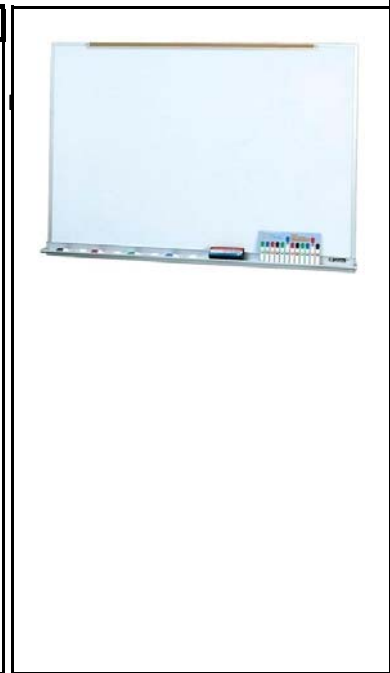


No substitution
Jeff Lewis, jeff@lewisgroup.com, 713-206-6228

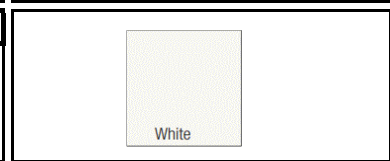
Moveable Furnishings Specification

| | | | |
|--------------|------------------------|----------|--------------|
| Project Name | Rice University | Date | 06.18.19 |
| | Kraft Building | Item | Markerboard |
| | | Item Tag | MB-03 |

| | |
|------------------------|---|
| Product | |
| Manufacturer / Product | Claridge |
| Product No. | |
| Description | InvisiMount Profile Series LCS Boards Z-crest Hangers 3'W X 4'H |
| Quantity: | 2 |
| Location: | Room 441, 442 |



| | |
|---------------|--------|
| Finish | |
| Description | Finish |
| Color | White |



No substitution
Jeff Lewis, jeff@lewisgroup.com, 713-206-6228

Moveable Furnishings Specification

Project Name **Rice University**
 Kraft Building

Date 07.22.19
 Item Markerboard
 Item Tag **MB-04 ALT**

Product

Manufacturer / Claridge
 Product
 Product No.
 Description InvisiMount Magnetic Glassboard, include magnets and marker caddy
 Z-cleat Hangers
 4'W X 4'H

Quantity: 8
 Location: **Room 325, 327, 331, 333, 338, 339**



Finish

Description Finish
 Color White

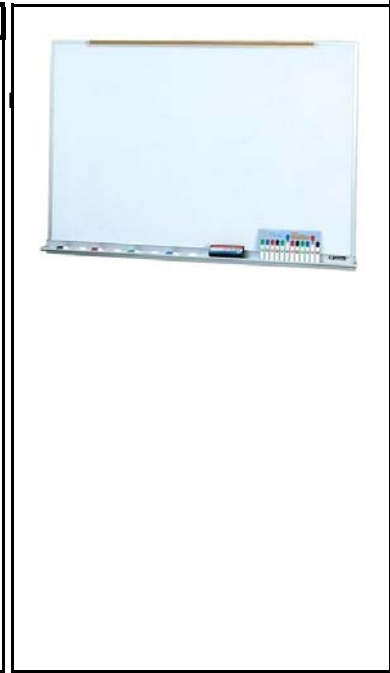


No substitution
 Jeff Lewis, jeff@lewisgroup.com, 713-206-6228

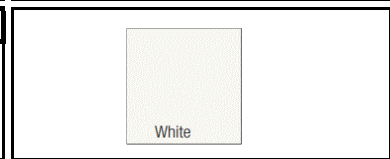
Moveable Furnishings Specification

| | | | |
|--------------|------------------------|----------|--------------|
| Project Name | Rice University | Date | 06.18.19 |
| | Kraft Building | Item | Markerboard |
| | | Item Tag | MB-04 |

| | |
|------------------------|---|
| Product | |
| Manufacturer / Product | Claridge |
| Product No. | |
| Description | InvisiMount Profile Series LCS Boards Z-cleat Hangers 4'W X 4'H |
| Quantity: | 8 |
| Location: | Room 325, 327, 331, 333, 338, 339 |



| | |
|---------------|--------|
| Finish | |
| Description | Finish |
| Color | White |



No substitution
Jeff Lewis, jeff@lewisgroup.com, 713-206-6228

Moveable Furnishings Specification

Project Name **Rice University**
Kraft Building

Date 07.22.19
Item Markerboard
Item Tag **MB-05 ALT**

Product

Manufacturer / Claridge
Product
Product No.
Description InvisiMount Magnetic Glassboard, include marker caddy and magnets
Z-cleat Hangers
8'W X 4'H

Quantity: 2
Location: **Room 340, 341**



Finish

Description Finish
Color White



No substitution
Jeff Lewis, jeff@lewisgroup.com, 713-206-6228

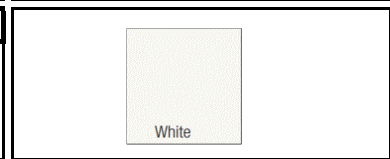
Moveable Furnishings Specification

| | | | |
|--------------|------------------------|----------|--------------|
| Project Name | Rice University | Date | 06.18.19 |
| | Kraft Building | Item | Markerboard |
| | | Item Tag | MB-05 |

| | |
|------------------------|---|
| Product | |
| Manufacturer / Product | Claridge |
| Product No. | |
| Description | InvisiMount Profile Series LCS Boards Z-crest Hangers 8'W X 4'H |
| Quantity: | 2 |
| Location: | Room 340, 341 |



| | |
|---------------|--------|
| Finish | |
| Description | Finish |
| Color | White |



No substitution
Jeff Lewis, jeff@lewisgroup.com, 713-206-6228

Moveable Furnishings Specification

Project Name **Rice University**
Kraft Building

Date 08.6.19

Item Storage

Item Tag **ST-01**

Product

Manufacturer / Global Industrial
Product

Product No. *WG189404*

Description Nexel Stainless Steel Wire Shelving
36"W X 24"D X 74"H

Quantity: 3

Location: **Room 206**



Finish

Description Frame Finish

Color Stainless Steel



www.globalindustrial.com

Moveable Furnishings Specification

Project Name **Rice University**
Kraft Building

Date 08.06.19

Item Storage

Item Tag **ST-02**

Product

Manufacturer / Global Industrial
Product

Product No. *WG189225*

Description Nexel Poly-Z-Brite Wire Shelving
30"W X 18"D X74"H

Quantity: 2

Location: **Room 206**



Finish

Description Frame Finish

Color Stainless Steel



www.globalindustrial.com

Moveable Furnishings Specification

Project Name **Rice University**
 Kraft Building

Date 08.06.19

Item Storage

Item Tag **ST-03**

Product

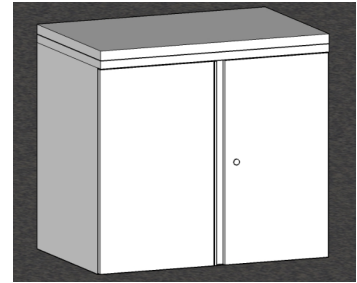
Manufacturer / Product Herman Miller or Similar

Product No. *LW400.3026*

Description Storage Case, W-Pull 30W 26H
 Textured paint on smooth steel
 Exact Size File Top, Sq-Edge, Laminate common Top 20" x 60"

Quantity: 4

Location: **Room 204, 304, 405, 475**



Finish

Description Finish

Color 98 Studio White



Moveable Furnishings Specification

Project Name **Rice University**
Kraft Building

Date 07.22.19

Item Storage

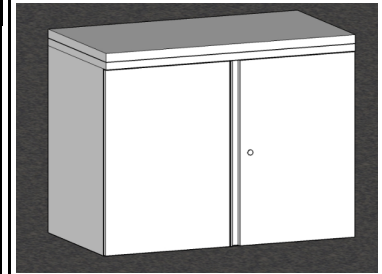
Item Tag **ST-04**

Product

Manufacturer / Product Herman Miller or Similar

Product No. LW400.3626

Description Storage Case,W-Pull 36W 26H
Textured paint on smooth steel
Exact Size File Top, Sq-Edge, Laminate commonTop 20" x 72"



Quantity: 2

Location: **Room 277**

Finish

Description Finish

Color 98 Studio White



Salisbury, rebekah_salisbury@hermanmiller.com, 713-296-9481

Rebekah

Moveable Furnishings Specification

Project Name **Rice University**
 Kraft Building

Date 06.18.19

Item Storage

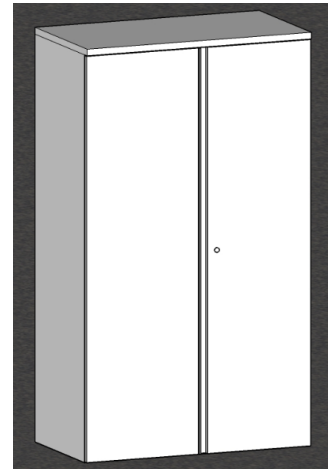
Item Tag **ST-05**

Product

Manufacturer / Product Herman Miller or Similar
 Product No. *LW400.3626*
 Description Storage Case,W-Pull 36W 64H
 Textured paint on smooth steel
 Interior – 4 shelves

Quantity: 2

Location: **Room 204**



Finish

Description Finish
 Color 98 Studio White



Salisbury, rebekah_salisbury@hermanmiller.com, 713-296-9481

Rebekah

Moveable Furnishings Specification

Project Name **Rice University**
 Kraft Building

Date 07.22.19

Item Storage

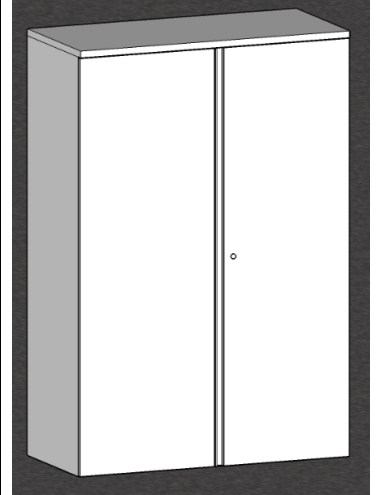
Item Tag **ST-06**

Product

Manufacturer / Product Herman Miller or similar
 Product No. *LW400.4264*
 Description Storage Case,W-Pull 42W 64H
 Textured paint on smooth steel
 Interior – 4 shelves, lockable

Quantity: 2

Location: **Room 405, 475**



Finish

Description Finish
 Color 98 Studio White



No substitution
 Rebekah Salisbury, rebekah_salisbury@hermanmiller.com, 713-296-9481

Moveable Furnishings Specification

| | | | |
|--------------|------------------------|----------|--------------|
| Project Name | Rice University | Date | 06.18.19 |
| | Kraft Building | Item | Table |
| | | Item Tag | TA-01 |

| | |
|------------------------|---|
| Product | |
| Manufacturer / Product | Carolina |
| Product No. | 810-36RD-15 |
| Description | X&O Tables 36x36x15 Cylinder Table |
| Quantity: | 11 |
| Location: | Room 103, 104, 200, 240, 260, 219, 318 , 400, 418, Kinder Reception |



| | |
|---------------|------------------------|
| Finish | |
| Description | Finish |
| Color | Steel (Steel Grey Oak) |



No substitution
Mike Denney, mike@mdi.design, 713-871-9009

Moveable Furnishings Specification

Project Name **Rice University**
Kraft Building

Date 06.18.19

Item Table

Item Tag **TA-02**

Product

Manufacturer / Carolina
Product

Product No. 810-20RD-20

Description X&O Tables 20x20x20 Cylinder Table

Quantity: 25

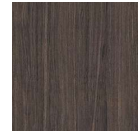
Location: **Room 103, 104, 200, 205, 217, 240, 260, 219, 318, Kinder Reception, HERC Reception, 400, 418**



Finish

Description Finish

Color Steel (Steel Grey Oak)



No substitution
Mike Denney, mike@mdi.design, 713-871-9009

Moveable Furnishings Specification

| | | | |
|--------------|------------------------|----------|--------------|
| Project Name | Rice University | Date | 06.18.19 |
| | Kraft Building | Item | Table |
| | | Item Tag | TA-03 |

| | |
|------------------------|---|
| Product | |
| Manufacturer / Product | Geiger |
| Product No. | <i>ALH1B-21W</i> |
| Description | Loophole End Table, Round Walnut Frame Glass Top 21x21x20H |
| Quantity: | 1 |
| Location: | Room 219 |



| | |
|---------------|-------------------|
| Finish | |
| Description | Wood Finish |
| Color | LBC Walnut on Ash |



No substitution
Jamie Manceaux, jamie_manceaux, 281.753.2700

Moveable Furnishings Specification

Project Name **Rice University**
Kraft Building

Date 06.18.19

Item Table

Item Tag **TA-03A**

Product

Manufacturer / Geiger
Product

Product No. *ALH1A-36W*

Description Loophole Coffee Table, Round
Walnut Frame
Glass Top
36x36x14H



Quantity: 1

Location: **Room 219**

Finish

Description Wood Finish

Color LBC Walnut on Ash

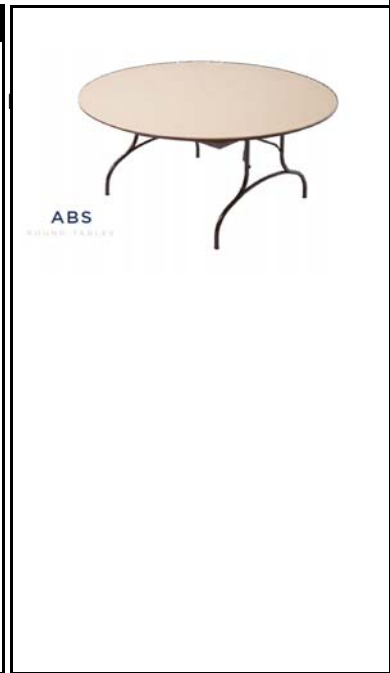


No substitution
Jamie Manceaux, jamie_manceaux, 281.753.2700

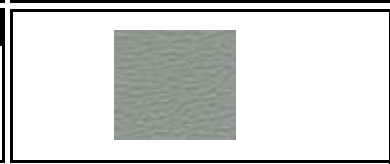
Moveable Furnishings Specification

| | | | |
|--------------|------------------------|----------|--------------|
| Project Name | Rice University | Date | 06.18.19 |
| | Kraft Building | Item | Table |
| | | Item Tag | TA-04 |

| | |
|------------------------|--|
| Product | |
| Manufacturer / Product | Mitylite |
| Product No. | CT72GRY1 |
| Description | 6' Grey Texture Circular Table 29" Tall Grey Trim Wishbone Legs 08 |
| Quantity: | 18 |
| Location: | Room 130 |



| | |
|---------------|------------|
| Finish | |
| Description | Top Finish |
| Color | Grey |



No substitution
Heather Noble, heather.noble@mityinc.com, 800-431-9936

Moveable Furnishings Specification

| | | | |
|--------------|------------------------|----------|---------------|
| Project Name | Rice University | Date | 06.18.19 |
| | Kraft Building | Item | Table |
| | | Item Tag | TA-04A |

| | |
|------------------------|--|
| Product | |
| Manufacturer / Product | Mitylite |
| Product No. | <i>CRTCT42-72BLK26</i> |
| Description | Cart, holds 42"-72" Circular Table Non-marring 6" casters Cart holds (12) CT 72 Tables |
| Quantity: | 2 |
| Location: | Room 130 |



No substitution
Heather Noble, heather.noble@mityinc.com, 800-431-9936

Moveable Furnishings Specification

Project Name **Rice University**
 Kraft Building

Date 08.06.19

Item Table

Item Tag **TA-05**

Product

Manufacturer / Product Herman Miller or Similar
 Product No. *DT1AS.2460LP*
 Description Everywhere Rectangular Table
 Squared Edge
 Laminate Top/Thermo Edge
 Post Leg
 24D 60W

Quantity: 3

Location: **Room 130**



Finish

Description Top Finish

Color 98 Studio White



Finish

Description Base Finish

Color MS Metallic Silver



Moveable Furnishings Specification

| | | | |
|--------------|------------------------|----------|--------------|
| Project Name | Rice University | Date | 06.18.19 |
| | Kraft Building | Item | Table |
| | | Item Tag | TA-06 |

| | |
|------------------------|--|
| Product | |
| Manufacturer / Product | Irwin Seating Company |
| Product No. | 920.11.11.00.00 |
| Description | No 920 Focus Table Pedestal Platform No 11 Radiused Laminate Tables w/T-mold edge 24" table depth No 11 Radiused plycore modesties w/T-mold edge 15"modesty height |
| Quantity: | 78 |
| Location: | Room 130 |



| | |
|---------------|---------------|
| Finish | |
| Description | Top Finish |
| Color | WZ00497 Crema |



No substitution
Jennifer Miller, jennfermiller@the-lowegroup.com, 281-255-4449

Moveable Furnishings Specification

Project Name **Rice University**
 Kraft Building

Date 06.18.19

Item Table

Item Tag **TA-08**

Product

Manufacturer / OFS
 Product

Product No. A42S

Description Applause 42x42 Square Top
 TFL Laminate
 Square Edge
 Duece Static X Base
 Glides

Quantity: 5

Location: **Room 103, 104, 260, 318, 418**



Finish

Description Top Finish

Color Steel Oak Grey



Finish

Description Base Finish

Color Luster Grey



No substitution
 Mike Denney, mike@mdi.design, 713-871-9009

Moveable Furnishings Specification

Project Name **Rice University**
 Kraft Building

Date 08.06.19

Item Table

Item Tag **TA-09**

Product

Manufacturer / Product Herman Miller or Similar

Product No. *OA300.16LP*

Description Swoop Work Table
 Laminate
 Exposed Plywood Edge
 16" dia X 25 1/2" H

Quantity: 1

Location: **Room 124**



Finish

Description Top Finish

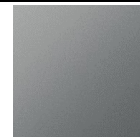
Color LBC Walnut on Ash



Finish

Description Base Finish

Color MS Metallic Silver



Moveable Furnishings Specification

Project Name **Rice University**
 Kraft Building

Date 08.06.19

Item Table

Item Tag **TA-10**

Product

Manufacturer / Product Herman Miller or Similar
 Product No. *DT1AS.3072LP*
 Description Everywhere Rectangular Table
 Squared Edge
 Laminate Top/Thermo Edge
 Post Leg
 30D 72W

Quantity: 6

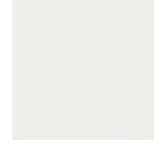
Location: **Room 204, 240, 277, 304, 405, 475**



Finish

Description Top Finish

Color 98 Studio White



Finish

Description Base Finish

Color MS Metallic Silver



Moveable Furnishings Specification

Project Name **Rice University**
Kraft Building

Date 06.18.19

Item Table

Item Tag **TA-11**

Product

Manufacturer / Product OFS

Product No. NS-919295

Description Custom Conference Top Rectangular With 3MM Edge
204"W X 72"D X 30"H. (RM 202)
Four piece with standard TFL with the grain running side to side.
A grain match is not guaranteed.
3MM PVC edge 1.13"T.
Base kit Included: 164"W x 45"D x 28.75"H. M-TPBK.
Three bases.
Removable Access panel per base.
Support beams with 10) mouse holes four on each lo long side and one on outside of both bases.
Standard TFL options.
Edge power
6.5x3x1.875 White Power Supply
(2) 15 amp outlets (2) USB charging ports (mounts below worksurface)
Power Supply (black) Mounts below worksurface (6) 10 am outlets
Wire Manager Strip (set of 4)
24" Wire Manager, include 2 field grommet cuts

Quantity: 1

Location: **Room 202**



Finish

Description Finish
Color Steel Grey Oak



No substitution
Mike Denney, mike@mdi.design, 713-871-9009

Moveable Furnishings Specification

Project Name **Rice University**
 Kraft Building

Date 06.18.19

Item Table

Item Tag **TA-12**

Product

Manufacturer / Product OFS

Product No. NS-919296

Description Custom Conference Top Rectangular With 3MM Edge
 192"W X 72"D X 30"H. (RM 280)
 Four piece with standard TFL with the grain running side to side a grain match is not guaranteed.
 3MM PVC edge
 Base kit Included: 152"W x 45"D x 28.75"H. M-TPBK.
 Three bases.
 Removable Access panel per base.
 Support beams with 10) mouse holes four on each long side and one on outside of both bases.
 Standard TFL options.
 Edge power:
 6.5x3x1.875 White Power Supply
 (2) 15 amp outlets (2) USB charging ports (mounts below worksurface)
 Power Supply (black) Mounts below worksurface (6) 10 am outlets
 Wire Manager Strip (set of 4)
 24" Wire Manager, include 2 field cut grommets

Quantity: 1

Location: **Room 280**



Finish

Description Finish
 Color Steel Grey Oak



No substitution
 Mike Denney, mike@mdi.design, 713-871-9009

Moveable Furnishings Specification

Project Name **Rice University**
Kraft Building

Date 06.14.19

Item Table

Item Tag **TA-13**

Product

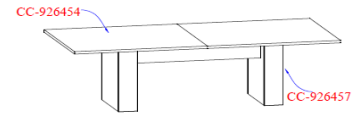
Manufacturer / Product OFS

Product No. CC-926454, CC-926457

Description INTERMIX CONFERENCE TOP RECTANGULAR WITH 3MM PVC EDGE
114"W X 54"D X 1.125"H .
Special feature:size.
Two piece top requires three bases.
No cutout(QR).
In standard wood grain TFL
QR Power Cutout No Cutout
INTERMIX BASE CONFERENCE 74"W X 33"D X 28.75"H.
Special feature:size and mouseholes.
CC-M8027TPBK to be used with 114"w x 54"D rectangular top.
With 2)30"w bases and beam.
10)mouseholes on beam/four on each long side and one on outside of both bases.
In standard TFL choice.
6.5x3x1.875 White Power Supply,
2) 15 amp outlets (2) USB charging ports (mounts below worksurface)
Edge Power Supply (black) Mounts below worksurface (6) 10 am outlets
Wire Manager Strip (set of 4)
24" Wire Manager, include 2 field cut grommets

Quantity: 1

Location: **Room 244**



Finish

Description Finish
Color Steel Grey Oak



No substitution
Mike Denney, mike@mdi.design, 713-871-9009

Moveable Furnishings Specification

Project Name **Rice University**
 Kraft Building or Similar

Date 08.06.19

Item Table

Item Tag **TA-14**

Product

Manufacturer / Product Herman Miller

Product No. *ET152VSLNG*

Description Eames Conference Table
 Oval
 Segmented Base
 Laminate Top/Vinyl Edge
 No Grommet,28-1/2H 42D 78W

Quantity: 1

Location: **Room 220**



Finish

Description Top Finish

Color Walnut on Ash



Finish

Description Base Finish

Color MS Metallic Silver



Moveable Furnishings Specification

Project Name **Rice University**
Kraft Building

Date 06.18.19

Item Table

Item Tag **TA-15**

Product

Manufacturer / Product OFS

Product No. NS-919299

Description Custom Conference Top Rectangular With 3MM Edge
288"W X 72"D X 30"H. (RM 302/380)
Five piece with standard TFL with the grain running side to side a grain match is not guaranteed.
3MM PVC edge
Base kit Included: 248"W x 45"D x 28.75"H. M-TPBK.
Five bases.
Removable Access panel per base.
Support beams with 12) mouse holes five on each long side and one on outside of both bases.
Standard TFL options.
Shipped KD.
6.5x3x1.875 White Power Supply,
2) 15 amp outlets (2) USB charging ports (mounts below worksurface)
Edge Power Supply (black) Mounts below worksurface (6) 10 am outlets
Wire Manager Strip (set of 4)
24" Wire Manager, include 2 field cut grommets

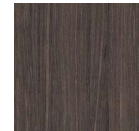
Quantity: 1

Location: **Room 302**



Finish

Description Finish
Color Steel Grey Oak



No substitution
Mike Denney, mike@mdi.design, 713-871-9009

Moveable Furnishings Specification

Project Name **Rice University**
 Kraft Building

Date 06.18.19

Item Table

Item Tag **TA-16**

Product

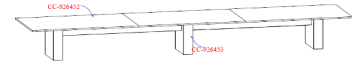
Manufacturer / OFS
 Product

Product No. CC-926452, CC-926453

Description Intermix Conference Top Rectangular
 With 3MM PVC Edge
 276"W X 59.5"D X 1.125"H.
 Special feature:size.
 Three piece top requires special base kit.
 No cutout(QR).
 In standard wood grain TFL choice.
 INTERMIX BASE CONFERENCE
 236"W X 33"D X 28.75"H.
 Special feature: mouseholes and 3rd base.
 CC-M15233TPBK to be used with 276" X 59.5" rectangular top.
 With 3"w bases and beam. 6.5x3x1.875 White Power Supply, (2) 15 amp outlets
 (2) USB charging ports (mounts below worksurface)
 Edge Power Supply (black) Mounts below worksurface (6) 10 am outlets
 Wire Manager Strip (set of 4)
 24" Wire Manager, include 2 field cut grommets

Quantity: 1

Location: **Room 380**



Finish

Description Finish
 Color Steel Grey Oak



No substitution
 Mike Denney, mike@mdi.design, 713-871-9009

Moveable Furnishings Specification

Project Name **Rice University**
 Kraft Building

Date 06.18.19

Item Table

Item Tag **TA-17**

Product

Manufacturer / OFS

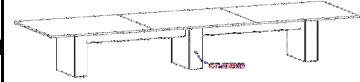
Product

Product No. CC-919338, CC-919339

Description Intermix Conference Top Rectangular
 With 3MM PVC Edge
 204"W X 59.5"D X 1.125"H.
 Special feature:size.
 Three piece top requires special base kit.
 No cutout(QR).
 In standard wood grain TFL choice.
 INTERMIX BASE CONFERENCE
 164"W X 33"D X 28.75"H .
 Special feature:size, mouseholes.
 CC-M15233TPBK to be used with 204" X 59.5" rectangular top.
 With 3)30"w bases and beam.
 6.5x3x1.875 White Power Supply, (2) 15 amp outlets (2) USB charging ports
 (mounts below worksurface)
 Edge Power Supply (black) Mounts below worksurface (6) 10 am outlets
 Wire Manager Strip (set of 4)
 24" Wire Manager, include 2 field cut grommets

Quantity: 1

Location: **Room 204**



Finish

Description

Finish

Color

Steel Grey Oak



No substitution

Mike Denney, mike@mdi.design, 713-871-9009

Moveable Furnishings Specification

Project Name **Rice University**
 Kraft Building

Date 06.18.19

Item Table

Item Tag **TA-18**

Product

Manufacturer / OFS

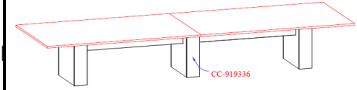
Product

Product No. CC-919337, CC-919336

Description Intermix Conference Top Rectangular
 With 3MM PVC Edge
 192"W X 59.5"D X 1.125"H
 Special feature:size.
 Three piece top requires special base kit.
 No cutout(QR).
 In standard wood grain TFL choice.
 INTERMIX BASE CONFERENCE
 152"W X 33"D X 28.75"H.
 Special feature:mouseholes and 3rd base.
 CC-M15233TPBK to be used with 192" X 59.5" rectangular top. With 3)"w bases
 and beam.
 6.5x3x1.875 White Power Supply, (2) 15 amp outlets (2) USB charging ports
 (mounts below worksurface)
 Edge Power Supply (black) Mounts below worksurface (6) 10 am outlets
 Wire Manager Strip (set of 4)
 24" Wire Manager, include 2 field cut grommets

Quantity: 1

Location: **Room 477**



Finish

Description Finish
 Color Steel Grey Oak



No substitution
 Mike Denney, mike@mdi.design, 713-871-9009

Moveable Furnishings Specification

Project Name **Rice University**
 Kraft Building

Date 08.06.19

Item Table

Item Tag **TA-19**

Product

Manufacturer / Product Herman Miller or Similar

Product No. *FTS10.3084LS, FSLS-41*

Description Rectangular table
 Sq-Edge
 Lam Top/Thermo Edge
 30D 84W

Quantity: 1

Location: **Room 377**



Finish

Description Top Finish

Color 98 Studio White



Finish

Description Meridian Storage Surround Finish

Color MS Metallic Silver



Moveable Furnishings Specification

Project Name **Rice University**
Kraft Building

Date 06.18.19

Item Table

Item Tag **TA-20**

Product

Manufacturer / Surface Tech
Product

Product No. 1-CHAT-OMD-684-LVE

Description Chat Open O Media 48x84 LAM PV, Overall Height 29"
cut 2 grommets

Field

Quantity: 4

Location: **Room 330, 346, 347, 349**



Finish

Description Finish

Color Formica 8909-NG Cascara Teakwood



No substitution
Jeff Lewis, jeff@lewisrepgroup.com, 713-206-6228

Moveable Furnishings Specification

Project Name **Rice University**
Kraft Building

Date 08.06.19

Item Table

Item Tag **TA-21**

Product

Manufacturer / Product Herman Miller or Similar

Product No. *DT1AS.3054LT*

Description Everywhere Rectangular Table
Squared Edge
Lam Top/Thermo Edge
T-Leg
30D 54W
Glides

Quantity: 16

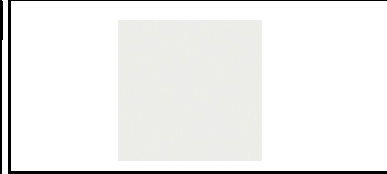
Location: **Room 341**



Finish

Description Top Finish

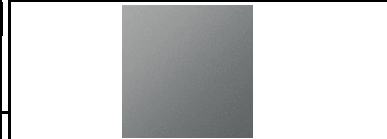
Color 98 Studio White



Finish

Description Meridian Storage Surround Finish

Color MS Metallic Silver



Moveable Furnishings Specification

Project Name **Rice University**
Kraft Building

Date 08.06.19

Item Table

Item Tag **TA-22**

Product

Manufacturer / Product Herman Miller or Similar

Product No. *DT1AS.3060LT*

Description Everywhere Rectangular Table
Squared Edge
Lam Top/Thermo Edge
T-Leg
30D 60W
Glides

Quantity: 9

Location: **Room 339, 340**



Finish

Description Top Finish

Color 98 Studio White



Finish

Description Meridian Storage Surround Finish

Color MS Metallic Silver

